

**TOURIST ACCOMMODATION, NEW SOUTH WALES
DECEMBER QUARTER 1994**

MAIN FEATURES

DECEMBER QUARTER 1994
COMPARED WITH
DECEMBER QUARTER 1993

HOTELS, MOTELS AND GUEST HOUSES

- Rooms available decreased by 0.4 per cent from 56,901 to 56,645 while bed spaces increased from 164,763 to 165,298.
- Room nights occupied increased by 6.7 per cent from 2,871,767 to 3,065,281 overall, ranging from the largest increases of 11.3 per cent for Sydney Statistical Division and 8.2 per cent for the South Eastern Statistical Division through to a decrease for North Western and Far West Statistical Divisions of 4.3 per cent.
- The room occupancy rate overall rose from 55.1 per cent to 58.8 per cent, with Sydney Statistical Division recording a 7.8 percentage point increase to 71.2 per cent.
- Guest nights increased by 5.6 per cent from 5,122,574 to 5,409,992 and the bed occupancy rate increased from 34.0 per cent to 35.6 per cent.
- Guest arrivals increased by 6.4 per cent from 2,757,194 to 2,935,012 while the average length of stay fell from 1.9 days to 1.8 days overall, ranging from 1.6 days for star grade 2 establishments to 2.2 days for star grade 4 establishments.
- Takings from accommodation increased by 12.9 per cent from \$243.6m to \$274.9m and average takings per room night occupied increased from \$85 to \$90.

HOLIDAY FLATS, UNITS AND HOUSES

- The number of units, etc. available for short-term letting increased by 3.1 per cent from 10,440 to 10,759 while unit nights occupied increased by 7.5 per cent from 392,784 to 422,212.
- The unit occupancy rate increased from 41.0 per cent to 42.7 per cent.
- Unit lettings increased by 18.2 per cent from 70,747 to 83,619 while the average length of stay decreased from 5.6 days to 5.0 days.
- Accommodation takings increased by 12.2 per cent from \$23.5m to \$26.3m while the average takings per unit night occupied increased from \$60 to \$62.

CARAVAN PARKS

- Capacity available decreased by 0.9 per cent from 96,002 to 95,172 powered and unpowered sites and cabins, etc.
- Long-term residents occupied 15,685 sites (16.5 per cent), while 23,152 sites (24.3 per cent) were permanently reserved but only casually occupied by their tenants and an average of 10,759 sites (11.3 per cent) were occupied by other short-term guests.
- Site nights occupied decreased by 0.5 per cent from 4,585,060 to 4,562,787 and the site occupancy rate fell by 0.3 percentage points to 52.1 per cent.
- Takings from accommodation rose by 3.9 per cent from \$44.1m to \$45.9m while average takings per site night occupied were unchanged at \$10.

VISITOR HOSTELS

- Bed spaces available increased by 14.9 per cent from 5,026 to 5,774 while guest nights increased by 24.0 per cent from 258,747 to 320,821.
- The bed occupancy rate rose from 56.5 per cent to 60.4 per cent.
- Guest arrivals increased by 32.9 per cent from 73,271 to 97,344 while the average length of stay fell from 3.5 days to 3.3 days.
- Accommodation takings increased by 27.8 per cent from \$3.4m to \$4.4m and the average tariff increased from \$13 to \$14 per guest night.

INQUIRIES

- *for further information about statistics in this publication and the availability of related unpublished statistics, contact Jillian Johnson on 008 077327 or any ABS office.*
- *for information about other ABS statistics and services, refer to the back page of this publication.*

CONTENTS

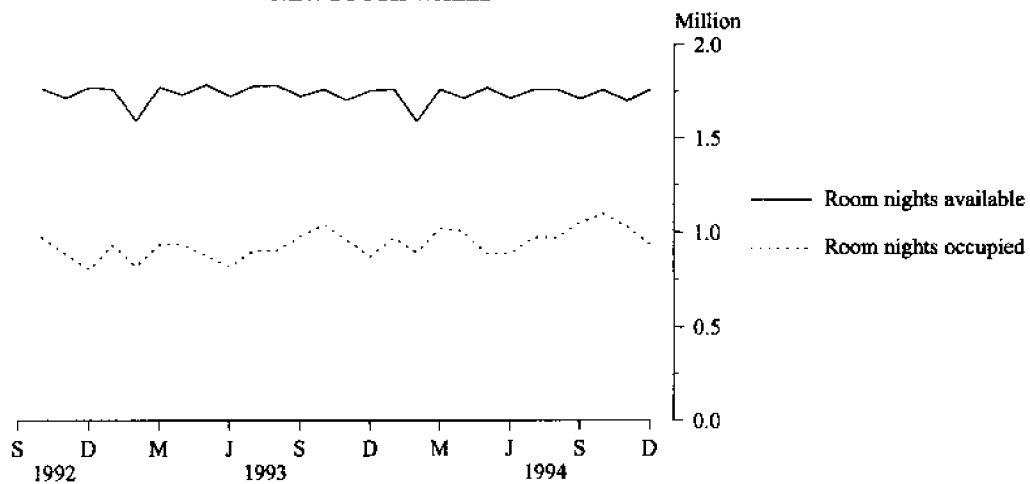
<i>Table</i>		<i>Page</i>
"	Main features	1
"	Diagrams	2
1	Summary of hotels, motels and guest houses with facilities, New South Wales	4
2	Summary of caravan parks, New South Wales	5
3	Summary of holiday flats, units and houses, New South Wales	6
4	Summary of visitor hostels, New South Wales	6
5	Hotels, motels and guest houses with facilities by establishment size, New South Wales	7
6	Hotels, motels and guest houses with facilities by star grading, Sydney Statistical Division and New South Wales	8
7	Hotels, motels and guest houses with facilities by statistical division, New South Wales	10
8	Hotels, motels and guest houses with facilities: Statistical divisions and selected statistical local areas, New South Wales	14
9	Holiday flats, units and houses by statistical division, New South Wales	20
10	Holiday flats, units and houses: Selected statistical divisions and statistical local areas, New South Wales	22
11	Caravan parks: Statistical divisions and selected statistical local areas, New South Wales	24
12	Caravan parks by statistical division, New South Wales	28
13	Visitor hostels by statistical division, New South Wales	31
"	Explanatory Notes	32
"	Reference map – statistical divisions of New South Wales	35

TABLE 2 — SUMMARY OF CARAVAN PARKS, NEW SOUTH WALES

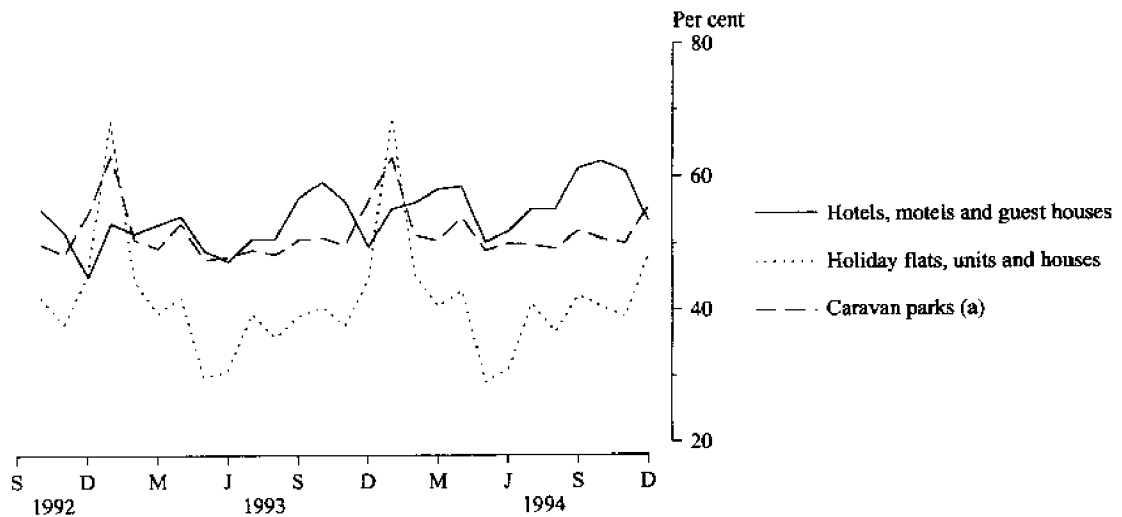
Particulars	Unit	Quarter ended				Year ended		December 1993	December 1994
		September 1993	December 1993	March 1994	June 1994	September 1994	December 1994		
		SHORT-TERM CARAVAN PARKS (a)							
Establishments	No.	471	471	471	469	486	481
Capacity									
On-site vans	No.	3,249	3,285	3,274	3,244	3,355	3,361
Other powered sites	No.	42,864	42,805	42,501	42,593	43,210	42,983
Unpowered sites	No.	15,883	16,010	15,526	14,999	15,454	15,593
Cabins, etc.	No.	2,849	2,835	2,876	2,916	3,064	3,050
Total capacity	No.	64,845	64,935	64,177	63,752	65,083	64,987
Sites occupied by long-term guests	No.	3,548	3,504	3,544	3,557	3,685	3,620
Other sites permanently reserved	No.	21,766	21,902	21,998	21,892	21,985	22,027
Employment (persons)	No.	1,788	1,891	1,893	1,795	1,901	2,092
Site nights occupied	'000	2,913.0	3,089.1	3,224.5	2,949.8	2,984.4	3,125.0	11,186.3	12,283.7
Site occupancy rate	per cent	48.8	52.4	55.8	50.8	49.8	52.3	50.5	52.2
Takings from accommodation	\$'000	21,210	27,967	29,955	21,453	22,725	29,689	94,144	103,822
LONG-TERM CARAVAN PARKS (a)									
Establishments	No.	326	327	326	325	312	312
Capacity									
On-site vans	No.	3,557	3,621	3,665	3,649	3,461	3,467
Other powered sites	No.	20,654	20,599	20,657	20,644	20,034	20,062
Unpowered sites	No.	4,818	4,986	4,835	4,788	4,615	4,693
Cabins, etc.	No.	1,810	1,861	1,915	1,936	1,902	1,963
Total capacity	No.	30,839	31,067	31,072	31,017	30,012	30,185
Sites occupied by long-term guests	No.	12,128	12,309	12,235	12,274	12,018	12,065
Other sites permanently reserved	No.	984	1,257	1,295	1,334	1,143	1,125
Employment (persons)	No.	1,189	1,227	1,183	1,179	1,163	1,171
Site nights occupied	'000	1,437.5	1,496.0	1,490.0	1,450.1	1,423.3	1,437.8	6,694.8	5,801.1
Site occupancy rate	per cent	50.7	52.5	53.3	51.4	51.5	51.8	53.2	52.0
Takings from accommodation	\$'000	15,377	16,162	16,901	15,560	15,418	16,173	67,859	64,053
TOTAL CARAVAN PARKS									
Establishments	No.	797	798	797	794	798	793
Capacity									
On-site vans	No.	6,806	6,906	6,939	6,893	6,816	6,828
Other powered sites	No.	63,518	63,404	63,158	63,237	63,244	63,045
Unpowered sites	No.	20,701	20,996	20,361	19,787	20,069	20,286
Cabins, etc.	No.	4,659	4,696	4,791	4,852	4,966	5,013
Total capacity	No.	95,684	96,002	95,249	94,769	95,095	95,172
Sites occupied by long-term guests	No.	15,676	15,813	15,779	15,831	15,703	15,685
Other sites permanently reserved	No.	22,750	23,159	23,293	23,226	23,128	23,152
Employment (persons)	No.	2,977	3,118	3,076	2,974	3,064	3,263
Site nights occupied	'000	4,350.4	4,585.1	4,714.4	4,399.9	4,407.7	4,562.8	17,881.0	18,084.8
Site occupancy rate	per cent	49.4	52.4	55.0	51.0	50.4	52.1	51.5	52.1
Takings from accommodation	\$'000	36,586	44,129	46,856	37,014	38,143	45,862	162,003	167,874

(a) A review of the occupancy of individual caravan parks resulted in reclassification of a net 13 caravan parks in September quarter 1994 from predominantly long-term to predominantly short-term.

**MONTHLY ROOM NIGHTS AVAILABLE AND OCCUPIED:
HOTELS, MOTELS AND GUEST HOUSES,
NEW SOUTH WALES**

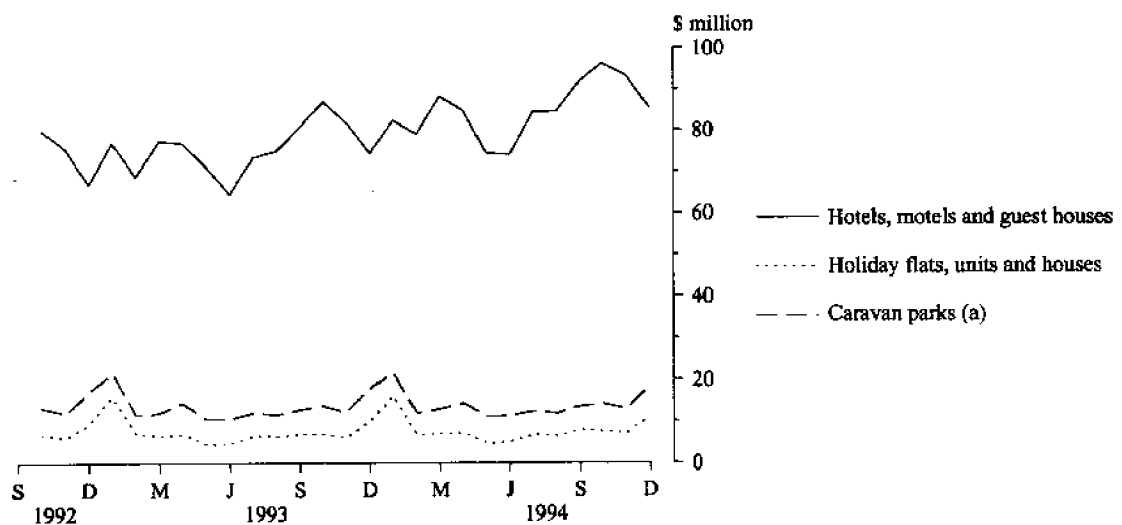


**MONTHLY OCCUPANCY RATES,
NEW SOUTH WALES**



(a) Includes ACT establishments before March quarter 1993.

**MONTHLY TAKINGS FROM ACCOMMODATION,
NEW SOUTH WALES**



(a) Includes ACT establishments before March quarter 1993.

TABLE 5—HOTELS, MOTELS AND GUEST HOUSES WITH FACILITIES BY ESTABLISHMENT SIZE, NEW SOUTH WALES

Particulars	Establishment size (No. of rooms)						New South Wales
	5-9	10-15	16-25	26-50	51-100	101+	
ESTABLISHMENTS, CAPACITY AND EMPLOYMENT							
<i>December quarter 1993—</i>							
Establishments	173	424	522	423	109	75	1,726
Guest rooms	1,257	5,168	10,512	14,744	7,401	17,819	56,901
Bed spaces	3,853	15,878	31,810	45,467	22,141	45,614	164,763
Employment (persons)	1,187	2,445	3,353	6,017	3,942	13,622	30,566
<i>December quarter 1994—</i>							
Establishments	173	415	520	427	108	74	1,718
Guest rooms	1,258	5,063	10,461	14,853	7,310	17,696	56,645
Bed spaces	3,831	15,501	31,718	46,084	22,114	46,042	165,298
Employment (persons)	1,143	2,325	3,519	6,065	4,139	14,346	31,538
ROOM NIGHTS OCCUPIED ('000)							
<i>December quarter 1993</i>	42.1	220.3	462.9	649.3	383.4	1,113.7	2,871.8
<i>1994—</i>							
October	16.2	81.2	179.0	256.1	144.2	418.8	1,095.4
November	14.2	69.8	151.8	222.3	139.8	434.5	1,032.3
December	14.2	69.0	145.4	201.1	126.2	381.6	937.5
<i>December quarter 1994</i>	44.5	220.0	476.1	679.5	410.2	1,234.9	3,065.3
ROOM OCCUPANCY RATES (per cent)							
<i>December quarter 1993</i>	36.9	46.4	48.0	47.9	56.5	68.5	55.1
<i>1994—</i>							
October	41.7	51.7	55.3	55.6	63.6	76.3	62.4
November	37.7	46.0	48.5	49.9	63.7	81.8	60.8
December	36.4	44.0	44.9	43.7	55.7	69.6	53.4
<i>December quarter 1994</i>	38.6	47.2	49.6	49.7	61.0	75.9	58.8
GUEST NIGHTS ('000)							
<i>December quarter 1993</i>	83.2	412.4	874.2	1,163.1	714.7	1,874.9	5,122.6
<i>1994—</i>							
October	31.5	154.6	340.3	463.5	265.3	689.3	1,944.5
November	25.7	123.0	268.2	374.1	237.4	691.6	1,720.1
December	28.7	137.7	286.9	384.1	242.1	665.9	1,745.4
<i>December quarter 1994</i>	85.9	415.3	895.4	1,221.8	744.8	2,046.7	5,410.0
BED OCCUPANCY RATES (per cent)							
<i>December quarter 1993</i>	23.7	28.3	30.0	27.8	35.1	45.6	34.0
<i>1994—</i>							
October	26.8	32.2	34.7	32.4	38.7	48.3	38.0
November	22.6	26.5	28.3	27.1	35.8	50.1	34.7
December	24.2	28.6	29.2	26.9	35.3	46.7	34.1
<i>December quarter 1994</i>	24.5	29.1	30.8	28.8	36.6	48.3	35.6
GUEST ARRIVALS ('000)							
<i>December quarter 1993</i>	48.7	275.8	574.4	710.6	324.7	823.0	2,757.2
<i>1994—</i>							
October	18.3	102.7	220.9	281.5	129.9	309.9	1,063.2
November	15.0	80.2	173.2	225.9	115.2	316.4	926.0
December	16.5	90.8	192.2	231.2	116.6	298.5	945.8
<i>December quarter 1994</i>	49.8	273.8	586.3	738.5	361.7	924.8	2,935.0
AVERAGE LENGTH OF STAY (days)							
<i>December quarter 1993</i>	1.7	1.5	1.5	1.6	2.2	2.3	1.9
<i>December quarter 1994</i>	1.7	1.5	1.5	1.7	2.1	2.2	1.8
TAKINGS FROM ACCOMMODATION (\$'000)							
<i>December quarter 1993</i>	2,355	10,986	25,452	42,606	32,667	129,494	243,561
<i>1994—</i>							
October	916	4,150	10,057	17,252	12,962	50,929	96,267
November	812	3,464	8,232	14,811	12,378	53,497	93,195
December	919	3,702	8,537	14,201	11,703	46,373	85,436
<i>December quarter 1994</i>	2,647	11,315	26,827	46,264	37,044	150,799	274,898

TABLE 1 — SUMMARY OF HOTELS, MOTELS AND GUEST HOUSES WITH FACILITIES, NEW SOUTH WALES (a)

Particulars	Unit	Quarter ended				Year ended			
		September	December	March	June	September	December	December	December
		1993	1993	1994	1994	1994	1994	1993	1994
LICENSED HOTELS WITH FACILITIES									
Establishments	No.	281	267	268	270	268	271
Guest rooms	No.	18,727	18,512	18,531	18,569	18,509	18,896
Bed spaces	No.	47,271	46,916	46,582	46,852	47,341	48,868
Employment (persons)	No.	15,951	16,038	16,058	16,227	16,522	16,914
Room nights occupied	'000	929.4	1,025.8	1,061.4	975.7	1,086.4	1,183.5	3,715.2	4,307.1
Room occupancy rate	per cent	53.9	60.7	63.7	57.7	63.8	68.1	55.3	63.4
Guest nights	'000	1,510.0	1,683.4	1,708.5	1,547.0	1,818.3	1,898.8	5,996.0	6,972.5
Bed occupancy rate	per cent	34.7	39.7	40.8	36.3	41.7	42.2	35.5	40.3
Guest arrivals	'000	722.0	791.0	809.7	710.5	837.4	933.6	2,739.4	3,291.2
Average length of stay	days	2.1	2.1	2.1	2.2	2.2	2.0	2.2	2.1
Takings from accommodation	\$'000	99,782	113,482	118,245	107,082	120,915	137,662	401,168	483,903
MOTELS AND GUEST HOUSES WITH FACILITIES									
Establishments	No.	1,475	1,459	1,452	1,458	1,454	1,447
Guest rooms	No.	38,630	38,389	38,238	38,443	38,382	37,749
Bed spaces	No.	118,298	117,847	117,503	118,265	117,850	116,430
Employment (persons)	No.	14,590	14,528	14,410	14,589	14,828	14,624
Room nights occupied	'000	1,855.3	1,846.0	1,821.4	1,797.9	1,904.3	1,881.7	7,253.3	7,405.3
Room occupancy rate	per cent	52.2	52.4	53.0	51.4	54.0	54.2	51.4	53.2
Guest nights	'000	3,427.6	3,439.1	3,465.2	3,279.2	3,560.8	3,511.2	13,477.0	13,816.4
Bed occupancy rate	per cent	31.5	31.8	32.8	30.5	32.9	32.8	31.3	32.2
Guest arrivals	'000	2,006.4	1,966.2	1,933.3	1,911.1	2,099.7	2,001.4	7,743.0	7,945.4
Average length of stay	days	1.7	1.7	1.8	1.7	1.7	1.8	1.7	1.7
Takings from accommodation	\$'000	129,672	130,079	131,829	126,379	140,105	137,236	508,349	535,550
TOTAL HOTELS, MOTELS AND GUEST HOUSES WITH FACILITIES									
Establishments	No.	1,756	1,726	1,720	1,728	1,722	1,718
Guest rooms	No.	57,357	56,901	56,769	57,012	56,891	56,645
Bed spaces	No.	165,569	164,763	164,085	165,117	165,191	165,298
Employment (persons)	No.	30,541	30,566	30,468	30,816	31,350	31,538
Room nights occupied	'000	2,784.7	2,871.8	2,882.8	2,773.6	2,990.7	3,065.3	10,968.5	11,712.4
Room occupancy rate	per cent	52.8	55.1	56.5	53.5	57.2	58.8	52.6	56.5
Guest nights	'000	4,937.6	5,122.6	5,173.6	4,826.2	5,379.1	5,410.0	19,473.0	20,788.9
Bed occupancy rate	per cent	32.4	34.0	35.1	32.1	35.4	35.6	32.5	34.6
Guest arrivals	'000	2,728.4	2,757.2	2,743.0	2,621.5	2,937.1	2,935.0	10,482.4	11,236.7
Average length of stay	days	1.8	1.9	1.9	1.8	1.8	1.8	1.9	1.9
Takings from accommodation	\$'000	229,454	243,561	250,074	233,461	261,020	274,898	909,518	1,019,453

(a) From December quarter 1993, establishments with fewer than 5 rooms have been formally excluded from the scope of this collection. See Explanatory Note 2 (page 32).

TABLE 6—HOTELS, MOTELS AND GUEST HOUSES WITH FACILITIES BY STAR GRADING,
 SYDNEY STATISTICAL DIVISION AND NEW SOUTH WALES—continued

Particulars	New South Wales						Total
	Star grading					Ungraded	
	1	2	3	4	5		
ESTABLISHMENTS, CAPACITY AND EMPLOYMENT							
<i>December quarter 1993—</i>							
Establishments	38	559	741	123	19	246	1,726
Guest rooms	561	11,312	21,820	11,712	5,726	5,770	56,901
Bed spaces	1,433	35,148	65,815	33,462	12,707	16,198	164,763
Employment (persons)	281	4,391	8,552	8,450	5,725	3,167	30,566
<i>December quarter 1994—</i>							
Establishments	41	513	812	124	16	212	1,718
Guest rooms	737	10,172	23,925	11,972	4,691	5,148	56,645
Bed spaces	1,998	31,479	72,452	33,977	11,299	14,093	165,298
Employment (persons)	494	4,025	9,639	9,372	4,846	3,162	31,538
ROOM NIGHTS OCCUPIED ('000)							
<i>December quarter 1993</i>	21.8	453.9	1,112.5	721.6	359.5	202.4	2,871.8
<i>1994—</i>							
October	8.5	156.6	461.9	285.9	113.3	69.3	1,095.4
November	8.2	132.7	414.6	285.2	123.7	67.8	1,032.3
December	8.2	128.0	376.9	256.7	107.3	60.4	937.5
<i>December quarter 1994</i>	24.9	417.4	1,253.4	827.7	344.4	197.5	3,065.3
ROOM OCCUPANCY RATES (per cent)							
<i>December quarter 1993</i>	42.3	44.3	55.5	67.0	68.2	38.3	55.1
<i>1994—</i>							
October	37.1	49.7	62.3	77.0	77.9	43.6	62.4
November	37.2	43.5	57.8	79.4	87.9	44.3	60.8
December	35.8	40.6	50.8	69.2	73.8	38.0	53.4
<i>December quarter 1994</i>	36.7	44.6	56.9	75.2	79.8	41.9	58.8
GUEST NIGHTS ('000)							
<i>December quarter 1993</i>	36.4	840.8	2,049.7	1,250.0	611.1	334.6	5,122.6
<i>1994—</i>							
October	14.6	293.3	853.9	488.0	181.5	113.2	1,944.5
November	13.2	231.0	714.7	468.2	187.0	106.1	1,720.1
December	13.3	247.9	730.3	474.6	178.4	100.9	1,745.4
<i>December quarter 1994</i>	41.0	772.2	2,298.9	1,430.8	546.8	320.2	5,410.0
BED OCCUPANCY RATES (per cent)							
<i>December quarter 1993</i>	27.6	26.8	33.9	40.6	52.3	22.5	34.0
<i>1994—</i>							
October	23.5	30.1	38.0	46.3	51.8	26.1	38.0
November	22.0	24.5	32.9	45.9	55.2	25.4	34.7
December	21.5	25.4	32.5	45.1	50.9	23.2	34.1
<i>December quarter 1994</i>	22.3	26.7	34.5	45.8	52.6	24.9	35.6
GUEST ARRIVALS ('000)							
<i>December quarter 1993</i>	19.1	528.9	1,210.7	571.3	236.7	190.5	2,757.2
<i>1994—</i>							
October	8.5	185.9	499.3	227.8	85.9	55.7	1,063.2
November	7.1	144.9	408.3	220.4	96.3	49.0	926.0
December	7.2	159.2	427.1	217.2	85.9	49.3	945.8
<i>December quarter 1994</i>	22.8	490.0	1,334.7	665.4	268.0	154.1	2,935.0
AVERAGE LENGTH OF STAY (days)							
<i>December quarter 1993</i>	1.9	1.6	1.7	2.2	2.6	1.8	1.9
<i>December quarter 1994</i>	1.8	1.6	1.7	2.2	2.0	2.1	1.8
TAKINGS FROM ACCOMMODATION (\$'000)							
<i>December quarter 1993</i>	926	22,992	75,872	73,726	54,687	15,358	243,561
<i>1994—</i>							
October	431	7,820	32,600	30,924	17,699	6,793	96,267
November	398	6,479	29,299	30,858	19,389	6,771	93,195
December	384	6,758	27,929	28,078	16,447	5,841	85,436
<i>December quarter 1994</i>	1,213	21,058	89,827	89,861	53,535	19,405	274,898

TABLE 3 — SUMMARY OF HOLIDAY FLATS, UNITS AND HOUSES, NEW SOUTH WALES

Particulars	Unit	Quarter ended				Year ended			
		September 1993	December 1993	March 1994	June 1994	September 1994	December 1994	December 1993	December 1994
Letting entities	No.	412	409	404	405	408	411
Flats, units and houses									
Single bedroom	No.	1,940	1,983	1,931	1,912	1,930	2,036
Multiple bedroom	No.	8,385	8,457	8,458	8,450	8,493	8,723
<i>Total flats, units and houses</i>	<i>No.</i>	<i>10,325</i>	<i>10,440</i>	<i>10,389</i>	<i>10,362</i>	<i>10,423</i>	<i>10,759</i>
Bed spaces	No.	47,895	48,817	48,601	48,315	48,518	50,408
Employment (persons)(a)	No.	1,087	1,105	1,154	1,081	1,075	1,151
Unit nights occupied	'000	362.4	392.8	483.8	323.4	382.3	422.2	1,551.9	1,611.7
Unit occupancy rate	per cent	38.2	41.0	51.8	34.3	40.0	42.7	41.1	42.2
Unit lettings	'000	62.1	70.7	76.8	60.3	69.0	83.6	264.6	289.7
Average length of stay	days	5.8	5.6	6.3	5.4	5.5	5.0	5.9	5.6
Takings from accommodation	\$'000	20,227	23,450	30,463	17,423	21,554	26,309	89,806	95,748

(a) Employment numbers exclude real estate agents and their employees.

TABLE 4 — SUMMARY OF VISITOR HOSTELS, NEW SOUTH WALES

Particulars	Unit	Quarter ended				Year ended			
		September 1993	December 1993	March 1994	June 1994	September 1994	December 1994	December 1993	December 1994
Establishments	No.	74	78	79	77	81	88
Bed spaces	No.	4,825	5,026	5,129	4,979	5,346	5,774
Employment (persons)	No.	275	300	297	280	299	327
Guest nights	'000	205.4	258.7	268.7	205.7	242.7	320.8	926.1	1,038.0
Bed occupancy rate	per cent	46.3	56.5	58.2	45.4	49.4	60.4	51.3	53.6
Guest arrivals	'000	60.1	73.3	79.4	59.6	68.3	97.3	270.0	304.7
Average length of stay	days	3.4	3.5	3.4	3.5	3.6	3.3	3.4	3.4
Takings from accommodation	\$'000	2,514	3,406	3,575	2,736	3,106	4,353	11,718	13,769

TABLE 7 — HOTELS, MOTELS AND GUEST HOUSES WITH FACILITIES BY STATISTICAL DIVISION,
NEW SOUTH WALES—continued

Particulars	Richmond - Tweed (SD)			Mid - North Coast (SD)			Northern (SD)		
	Licensed hotels	Motels, etc.	Total	Licensed hotels	Motels, etc.	Total	Licensed hotels	Motels, etc.	Total
ESTABLISHMENTS, CAPACITY AND EMPLOYMENT									
<i>December quarter 1993—</i>									
Establishments	9	101	110	13	181	194	11	115	126
Guest rooms	136	1,877	2,013	251	3,896	4,147	163	2,573	2,736
Bed spaces	420	6,125	6,545	637	12,678	13,315	434	7,932	8,366
Employment (persons)	127	634	761	199	1,721	1,920	93	819	912
<i>December quarter 1994—</i>									
Establishments	8	99	107	13	179	192	11	113	124
Guest rooms	131	1,796	1,927	260	3,870	4,130	162	2,527	2,689
Bed spaces	417	5,720	6,137	665	12,485	13,150	431	7,803	8,234
Employment (persons)	125	544	669	206	1,761	1,967	87	836	923
ROOM NIGHTS OCCUPIED ('000)									
<i>December quarter 1993</i>	5.8	89.8	95.6	9.1	207.2	216.3	4.1	118.5	122.6
<i>1994—</i>									
October	1.9	32.9	34.9	3.6	79.1	82.7	1.7	45.1	46.8
November	1.8	28.1	29.9	3.3	65.1	68.4	1.6	34.9	36.5
December	1.7	27.3	29.0	3.0	68.3	71.3	1.5	35.0	36.5
<i>December quarter 1994</i>	5.4	88.3	93.7	9.8	212.6	222.4	4.8	115.1	119.8
ROOM OCCUPANCY RATES (per cent)									
<i>December quarter 1993</i>	46.0	52.0	51.6	39.5	58.6	57.4	27.4	50.0	48.7
<i>1994—</i>									
October	47.5	59.1	58.3	44.2	66.0	64.6	33.9	57.6	56.2
November	45.8	52.2	51.8	41.9	56.1	55.2	32.4	46.1	45.3
December	41.1	49.0	48.5	36.8	56.9	55.7	29.5	44.7	43.8
<i>December quarter 1994</i>	44.8	53.5	52.9	40.9	59.7	58.5	31.9	49.5	48.4
GUEST NIGHTS ('000)									
<i>December quarter 1993</i>	10.1	173.1	183.2	15.1	440.3	455.5	6.4	215.5	222.0
<i>1994—</i>									
October	3.5	61.5	65.0	5.5	168.1	173.6	2.6	81.9	84.6
November	3.2	50.1	53.2	4.5	128.5	133.0	2.3	57.4	59.6
December	3.3	54.3	57.6	4.5	153.6	158.1	2.3	67.9	70.2
<i>December quarter 1994</i>	10.0	165.9	175.9	14.5	450.2	464.7	7.2	207.2	214.4
BED OCCUPANCY RATES (per cent)									
<i>December quarter 1993</i>	26.2	30.7	30.4	25.8	38.2	37.6	16.1	29.5	28.8
<i>1994—</i>									
October	27.3	34.7	34.2	26.6	43.4	42.6	19.8	33.9	33.1
November	25.4	29.2	28.9	22.8	34.3	33.7	17.5	24.5	24.1
December	25.7	30.6	30.3	21.8	39.7	38.8	17.3	28.1	27.5
<i>December quarter 1994</i>	26.1	31.5	31.2	23.8	39.2	38.4	18.2	28.9	28.3
GUEST ARRIVALS ('000)									
<i>December quarter 1993</i>	5.2	101.9	107.1	9.0	255.8	264.8	4.8	159.9	164.7
<i>1994—</i>									
October	1.8	39.0	40.8	3.0	97.0	100.1	1.8	59.5	61.3
November	1.5	30.8	32.4	2.8	73.0	75.8	1.5	42.6	44.2
December	1.5	33.0	34.5	2.6	87.8	90.4	1.6	54.2	55.8
<i>December quarter 1994</i>	4.9	102.8	107.7	8.4	257.9	266.3	4.9	156.3	161.3
AVERAGE LENGTH OF STAY (days)									
<i>December quarter 1993</i>	2.0	1.7	1.7	1.7	1.7	1.7	1.3	1.3	1.3
<i>December quarter 1994</i>	2.0	1.6	1.6	1.7	1.7	1.7	1.5	1.3	1.3
TAKINGS FROM ACCOMMODATION (\$'000)									
<i>December quarter 1993</i>	253	5,263	5,516	346	13,375	13,721	141	6,484	6,625
<i>1994—</i>									
October	87	1,823	1,910	143	5,158	5,301	60	2,645	2,705
November	82	1,509	1,590	122	4,101	4,223	46	1,959	2,004
December	86	1,703	1,789	130	5,164	5,294	49	2,056	2,105
<i>December quarter 1994</i>	254	5,035	5,290	396	14,423	14,819	155	6,659	6,815

TABLE 6 — HOTELS, MOTELS AND GUEST HOUSES WITH FACILITIES BY STAR GRADING,
SYDNEY STATISTICAL DIVISION AND NEW SOUTH WALES

Particulars	Sydney Statistical Division						Total
	Star grading						
	1 and 2	3	4	5	Ungraded		
ESTABLISHMENTS, CAPACITY AND EMPLOYMENT							
<i>December quarter 1993—</i>							
Establishments	78	139	55	18	48	338	
Guest rooms	1,918	7,063	n.p.	n.p.	2,217	25,503	
Bed spaces	5,302	19,823	n.p.	n.p.	5,422	66,103	
Employment (persons)	1,278	3,152	n.p.	n.p.	1,726	17,812	
<i>December quarter 1994—</i>							
Establishments	74	151	54	16	41	336	
Guest rooms	1,770	7,649	8,955	4,691	2,180	25,245	
Bed spaces	4,823	21,563	24,163	11,299	5,095	66,943	
Employment (persons)	1,368	3,653	6,932	4,846	2,086	18,885	
ROOM NIGHTS OCCUPIED ('000)							
<i>December quarter 1993</i>	89.8	395.3	n.p.	n.p.	101.9	1,486.5	
<i>1994—</i>							
October	30.4	153.6	220.7	113.3	40.4	558.5	
November	30.7	155.5	226.5	123.7	43.4	579.7	
December	29.2	140.0	202.8	107.3	36.9	516.3	
<i>December quarter 1994</i>	90.3	449.1	650.1	344.4	120.7	1,654.5	
ROOM OCCUPANCY RATES (per cent)							
<i>December quarter 1993</i>	50.9	61.0	n.p.	n.p.	50.2	63.4	
<i>1994—</i>							
October	55.3	64.8	79.5	77.9	59.8	71.4	
November	57.7	67.7	84.3	87.9	66.3	76.5	
December	53.3	59.0	73.1	73.8	54.7	66.0	
<i>December quarter 1994</i>	55.4	63.8	78.9	79.8	60.2	71.2	
GUEST NIGHTS ('000)							
<i>December quarter 1993</i>	161.3	711.9	n.p.	n.p.	159.7	2,543.6	
<i>1994—</i>							
October	52.9	280.0	366.6	181.5	61.5	942.3	
November	50.6	271.1	367.2	187.0	65.3	941.1	
December	52.3	263.5	364.8	178.4	57.8	916.7	
<i>December quarter 1994</i>	155.7	814.5	1,098.5	546.8	184.6	2,800.1	
BED OCCUPANCY RATES (per cent)							
<i>December quarter 1993</i>	33.1	39.1	n.p.	n.p.	32.1	41.9	
<i>1994—</i>							
October	35.4	41.9	48.9	51.8	38.9	45.4	
November	35.0	41.9	50.7	55.2	42.7	46.9	
December	35.0	39.4	48.7	50.9	36.6	44.2	
<i>December quarter 1994</i>	35.1	41.1	49.4	52.6	39.4	45.5	
GUEST ARRIVALS ('000)							
<i>December quarter 1993</i>	74.4	333.0	n.p.	n.p.	82.0	1,114.6	
<i>1994—</i>							
October	27.9	129.3	160.9	85.9	27.7	431.7	
November	25.8	120.5	163.9	96.3	27.2	433.6	
December	26.5	117.7	158.3	85.9	26.6	414.9	
<i>December quarter 1994</i>	80.2	367.5	483.0	268.0	81.5	1,280.3	
AVERAGE LENGTH OF STAY (days)							
<i>December quarter 1993</i>	2.2	2.1	n.p.	n.p.	1.9	2.3	
<i>December quarter 1994</i>	1.9	2.2	2.3	2.0	2.3	2.2	
TAKINGS FROM ACCOMMODATION (\$'000)							
<i>December quarter 1993</i>	5,444	31,267	n.p.	n.p.	9,729	158,165	
<i>1994—</i>							
October	1,832	13,068	24,732	17,699	5,000	62,331	
November	1,850	13,451	25,444	19,389	5,309	65,443	
December	1,818	12,248	22,585	16,447	4,349	57,447	
<i>December quarter 1994</i>	5,500	38,766	72,762	53,535	14,657	185,221	

TABLE 7 — HOTELS, MOTELS AND GUEST HOUSES WITH FACILITIES BY STATISTICAL DIVISION,
NEW SOUTH WALES—continued

Particulars	Murrumbidgee (SD)			Murray (SD)			New South Wales		
	Licensed hotels	Motels, etc.	Total	Licensed hotels	Motels, etc.	Total	Licensed hotels	Motels, etc.	Total
ESTABLISHMENTS, CAPACITY AND EMPLOYMENT									
<i>December quarter 1993—</i>									
Establishments	14	75	89	22	133	155	267	1,459	1,726
Guest rooms	262	1,775	2,037	457	3,137	3,594	18,512	38,389	56,901
Bed spaces	631	5,396	6,027	1,211	10,057	11,268	46,916	117,847	164,763
Employment (persons)	131	588	719	233	1,003	1,236	16,038	14,528	30,566
<i>December quarter 1994—</i>									
Establishments	14	75	89	22	132	154	271	1,447	1,718
Guest rooms	258	1,769	2,027	453	3,207	3,660	18,896	37,749	56,645
Bed spaces	636	5,427	6,063	1,232	10,350	11,582	48,868	116,430	165,298
Employment (persons)	147	601	748	237	999	1,236	16,914	14,624	31,538
ROOM NIGHTS OCCUPIED ('000)									
<i>December quarter 1993</i>	9.7	82.7	92.4	15.2	143.6	158.8	1,025.8	1,846.0	2,871.8
<i>1994—</i>									
October	3.7	32.3	36.0	6.0	57.9	63.9	400.5	694.9	1,095.4
November	3.5	28.8	32.2	4.6	48.2	52.8	416.8	615.5	1,032.3
December	2.9	25.2	28.0	3.5	40.6	44.1	366.2	571.4	937.5
<i>December quarter 1994</i>	10.0	86.3	96.3	14.0	146.7	160.8	1,183.5	1,881.7	3,065.3
ROOM OCCUPANCY RATES (per cent)									
<i>December quarter 1993</i>	40.3	50.6	49.3	36.2	49.8	48.0	60.7	52.4	55.1
<i>1994—</i>									
October	46.0	59.0	57.3	42.8	58.3	56.4	68.4	59.4	62.4
November	44.7	54.2	53.0	33.5	50.1	48.1	73.5	54.4	60.8
December	35.9	45.9	44.6	24.8	40.8	38.8	62.5	48.8	53.4
<i>December quarter 1994</i>	42.2	53.0	51.6	33.7	49.7	47.8	68.1	54.2	58.8
GUEST NIGHTS ('000)									
<i>December quarter 1993</i>	13.8	141.2	155.0	24.6	272.6	297.1	1,683.4	3,439.1	5,122.6
<i>1994—</i>									
October	5.2	54.8	60.0	10.0	108.9	118.9	641.7	1,302.8	1,944.5
November	4.6	45.1	49.7	7.2	87.1	94.3	640.3	1,079.8	1,720.1
December	4.1	44.8	48.8	5.4	80.6	86.0	616.8	1,128.6	1,745.4
<i>December quarter 1994</i>	13.9	144.7	158.6	22.6	276.6	299.2	1,898.8	3,511.2	5,410.0
BED OCCUPANCY RATES (per cent)									
<i>December quarter 1993</i>	23.8	28.4	27.9	22.1	29.5	28.7	39.7	31.8	34.0
<i>1994—</i>									
October	26.3	32.6	31.9	26.3	33.9	33.1	42.4	36.1	38.0
November	24.3	27.7	27.3	19.4	28.1	27.1	43.7	31.0	34.7
December	20.6	26.6	26.0	14.1	25.1	24.0	40.7	31.3	34.1
<i>December quarter 1994</i>	23.7	29.0	28.4	19.9	29.1	28.1	42.2	32.8	35.6
GUEST ARRIVALS ('000)									
<i>December quarter 1993</i>	8.0	102.8	110.9	14.0	166.7	180.7	791.0	1,966.2	2,757.2
<i>1994—</i>									
October	3.0	39.6	42.6	6.2	66.2	72.4	312.4	750.7	1,063.2
November	2.6	32.3	34.9	4.0	53.8	57.8	318.5	607.5	926.0
December	2.2	33.0	35.2	3.5	49.8	53.3	302.6	643.2	945.8
<i>December quarter 1994</i>	7.8	104.9	112.7	13.8	169.8	183.5	933.6	2,001.4	2,935.0
AVERAGE LENGTH OF STAY (days)									
<i>December quarter 1993</i>	1.7	1.4	1.4	1.8	1.6	1.6	2.1	1.7	1.9
<i>December quarter 1994</i>	1.8	1.4	1.4	1.6	1.6	1.6	2.0	1.8	1.8
TAKINGS FROM ACCOMMODATION (\$'000)									
<i>December quarter 1993</i>	414	4,767	5,181	567	8,496	9,064	113,482	130,079	243,561
<i>1994—</i>									
October	162	1,879	2,041	234	3,476	3,710	46,361	49,906	96,267
November	156	1,652	1,808	171	2,883	3,055	49,007	44,188	93,195
December	123	1,503	1,626	142	2,443	2,585	42,294	43,142	85,436
<i>December quarter 1994</i>	440	5,034	5,475	548	8,803	9,350	137,662	137,236	274,898

TABLE 7 — HOTELS, MOTELS AND GUEST HOUSES WITH FACILITIES BY STATISTICAL DIVISION,
NEW SOUTH WALES

Particulars	Sydney (SD)			Hunter (SD)			Illawarra (SD)		
	Licensed hotels	Motels, etc.	Total	Licensed hotels	Motels, etc.	Total	Licensed hotels	Motels, etc.	Total
ESTABLISHMENTS, CAPACITY AND EMPLOYMENT									
<i>December quarter 1993—</i>									
Establishments	107	231	338	20	139	159	16	105	121
Guest rooms	14,593	10,910	25,503	431	3,472	3,903	558	2,269	2,827
Bed spaces	34,796	31,307	66,103	1,257	10,810	12,067	1,669	6,696	8,365
Employment (persons)	13,262	4,550	17,812	432	1,707	2,139	623	887	1,510
<i>December quarter 1994—</i>									
Establishments	112	224	336	20	138	158	16	104	120
Guest rooms	14,890	10,355	25,245	480	3,458	3,938	572	2,217	2,789
Bed spaces	36,446	30,497	66,943	1,476	10,507	11,983	1,607	6,697	8,304
Employment (persons)	14,307	4,578	18,885	439	1,769	2,208	680	844	1,524
ROOM NIGHTS OCCUPIED ('000)									
<i>December quarter 1993</i>	896.9	589.7	1,486.5	17.2	169.2	186.4	27.2	94.6	121.9
<i>1994—</i>									
October	352.7	205.8	558.5	6.9	67.6	74.5	9.4	34.7	44.1
November	373.3	206.5	579.7	6.9	59.1	66.0	9.7	30.6	40.3
December	326.3	190.0	516.3	7.3	52.4	59.6	9.1	28.6	37.7
<i>December quarter 1994</i>	1,052.3	602.2	1,654.5	21.1	179.1	200.2	28.1	93.9	122.1
ROOM OCCUPANCY RATES (per cent)									
<i>December quarter 1993</i>	66.8	58.9	63.4	43.3	53.0	51.9	53.0	45.4	46.9
<i>1994—</i>									
October	76.4	64.1	71.4	46.5	63.1	61.0	53.0	50.4	51.0
November	83.6	66.5	76.5	48.2	56.9	55.9	56.4	46.0	48.2
December	70.7	59.2	66.0	48.8	48.9	48.8	51.1	41.7	43.6
<i>December quarter 1994</i>	76.8	63.2	71.2	47.8	56.3	55.3	53.5	46.0	47.6
GUEST NIGHTS ('000)									
<i>December quarter 1993</i>	1,468.4	1,075.2	2,543.6	29.9	299.2	329.1	45.8	173.6	219.4
<i>1994—</i>									
October	561.4	380.9	942.3	11.9	121.6	133.6	15.9	64.9	80.8
November	573.9	367.2	941.1	11.6	98.4	110.1	14.0	53.2	67.2
December	548.7	368.0	916.7	13.0	99.2	112.2	16.3	57.0	73.4
<i>December quarter 1994</i>	1,684.1	1,116.0	2,800.1	36.6	319.2	355.8	46.2	175.2	221.4
BED OCCUPANCY RATES (per cent)									
<i>December quarter 1993</i>	45.9	37.4	41.9	25.9	30.1	29.6	29.8	28.2	28.5
<i>1994—</i>									
October	49.7	40.3	45.4	26.1	37.3	36.0	31.9	31.3	31.4
November	52.5	40.1	46.9	26.3	31.2	30.6	29.0	26.5	27.0
December	48.6	38.9	44.2	28.4	30.4	30.2	32.8	27.5	28.5
<i>December quarter 1994</i>	50.2	39.8	45.5	26.9	33.0	32.3	31.3	28.4	29.0
GUEST ARRIVALS ('000)									
<i>December quarter 1993</i>	675.2	439.4	1,114.6	15.3	181.2	196.5	19.0	103.9	122.9
<i>1994—</i>									
October	267.2	164.6	431.7	6.5	69.1	75.6	8.8	40.1	48.9
November	281.5	152.1	433.6	6.0	59.3	65.3	8.0	34.0	41.9
December	263.7	151.2	414.9	6.8	57.9	64.7	9.3	33.8	43.2
<i>December quarter 1994</i>	812.4	467.9	1,280.3	19.3	186.4	205.7	26.0	107.9	134.0
AVERAGE LENGTH OF STAY (days)									
<i>December quarter 1993</i>	2.2	2.4	2.3	1.9	1.7	1.7	2.4	1.7	1.8
<i>December quarter 1994</i>	2.1	2.4	2.2	1.9	1.7	1.7	1.8	1.6	1.7
TAKINGS FROM ACCOMMODATION (\$'000)									
<i>December quarter 1993</i>	106,136	52,029	158,165	1,066	12,569	13,636	2,480	6,933	9,414
<i>1994—</i>									
October	43,455	18,876	62,331	475	5,252	5,726	1,020	2,616	3,636
November	46,481	18,961	65,443	421	4,370	4,791	996	2,261	3,257
December	39,717	17,730	57,447	504	4,099	4,603	975	2,166	3,140
<i>December quarter 1994</i>	129,653	55,568	185,221	1,400	13,720	15,120	2,991	7,043	10,034

AND SELECTED STATISTICAL LOCAL AREAS (a), NEW SOUTH WALES, DECEMBER QUARTER 1994

<i>Guest nights</i>				<i>Guest arrivals</i>				<i>Takings from accommodation (\$'000)</i>			
<i>Oct.</i>	<i>Nov.</i>	<i>Dec.</i>	<i>Dec. qtr</i>	<i>Oct.</i>	<i>Nov.</i>	<i>Dec.</i>	<i>Dec. qtr</i>	<i>Oct.</i>	<i>Nov.</i>	<i>Dec.</i>	<i>Dec. qtr</i>
SYDNEY STATISTICAL DIVISION											
7,891	7,122	8,045	23,058	4,986	4,974	5,244	15,204	259	253	258	769
11,102	9,692	9,535	30,329	7,477	6,014	6,040	19,531	605	561	529	1,695
5,849	4,087	5,851	15,787	3,288	2,257	3,290	8,835	197	167	227	591
40,048	27,800	28,015	95,863	18,965	13,676	12,985	45,626	2,201	1,524	1,484	5,210
3,211	2,676	2,693	8,580	2,649	2,276	2,170	7,095	103	94	79	276
3,392	2,650	2,299	8,341	2,395	1,994	1,881	6,270	140	114	102	356
29,708	23,615	29,155	82,478	14,295	12,186	13,029	39,510	1,428	1,264	1,367	4,059
7,860	6,953	6,968	21,781	4,631	3,633	3,793	12,057	368	347	296	1,011
7,314	7,454	7,473	22,241	2,799	2,584	2,701	8,084	396	414	398	1,208
11,108	9,307	9,068	29,483	5,866	4,251	4,919	15,036	516	601	457	1,575
6,469	6,690	6,299	19,458	3,294	3,279	2,581	9,154	339	366	306	1,012
6,399	6,310	7,620	20,329	5,025	4,625	4,306	13,956	291	262	295	848
17,431	16,215	19,162	52,808	6,039	6,100	6,393	18,532	1,228	1,247	1,382	3,857
21,123	24,619	21,659	67,401	8,582	10,090	8,571	27,243	1,756	2,103	1,768	5,628
32,718	33,070	28,854	94,642	14,439	14,875	13,838	43,152	1,988	2,113	1,676	5,777
11,363	10,624	10,713	32,700	4,644	4,391	4,599	13,634	493	475	464	1,432
1,877	1,933	2,427	6,237	1,285	1,303	1,493	4,081	136	164	163	463
23,959	25,926	26,615	76,500	11,150	12,022	11,499	34,671	1,285	1,547	1,483	4,315
24,166	25,396	24,570	74,132	16,444	17,193	17,527	51,164	1,598	1,728	1,488	4,814
12,882	13,031	14,328	40,241	3,537	3,576	3,561	10,674	989	1,071	922	2,982
176,633	183,782	176,642	537,057	71,492	72,485	68,027	212,004	8,520	8,949	8,347	25,816
2,644	2,303	2,404	7,351	1,611	1,532	1,587	4,730	120	111	114	346
8,465	8,045	8,912	25,422	3,656	3,724	3,791	11,171	413	418	452	1,284
271,903	283,315	260,684	815,902	131,785	143,160	128,423	403,368	25,201	27,376	22,578	75,155
102,135	109,487	105,087	316,709	37,323	39,651	40,144	117,118	6,455	6,887	5,873	19,215
2,506	2,835	2,607	7,948	952	1,092	1,022	3,066	88	94	83	265
18,557	18,521	19,575	56,653	5,195	5,414	5,152	15,761	908	942	951	2,801
1,253	1,270	1,068	3,591	934	857	840	2,631	51	54	34	139
13,958	14,796	14,912	43,666	4,529	4,875	5,274	14,678	1,063	1,191	1,094	3,348
16,730	14,485	17,301	48,516	8,863	8,135	9,045	26,043	652	596	661	1,909
41,694	37,077	36,162	114,933	23,603	21,418	21,177	66,198	2,545	2,407	2,113	7,066
942,348	941,086	916,703	2,800,137	431,733	433,642	414,902	1,280,277	62,331	65,443	57,447	185,221
HUNTER STATISTICAL DIVISION											
16,919	11,809	9,713	38,441	9,665	7,400	6,331	23,396	1,033	731	564	2,328
2,521	1,727	1,694	5,942	1,108	924	835	2,867	87	58	57	202
19,813	15,750	19,216	54,779	11,959	9,898	10,737	32,594	520	415	533	1,468
11,533	10,123	10,965	32,621	6,595	6,351	6,452	19,398	541	466	436	1,443
7,158	4,864	4,779	16,801	5,162	3,632	3,365	12,159	285	209	194	688
7,176	7,452	5,759	20,387	4,331	4,065	3,762	12,158	223	246	183	652
24,075	21,090	18,715	63,880	12,712	11,774	11,446	35,932	1,157	1,089	825	3,071
31,177	26,074	29,983	87,234	17,076	14,896	15,844	47,816	1,353	1,132	1,373	3,858
2,869	2,728	2,196	7,793	1,923	1,890	1,577	5,390	97	94	89	280
8,672	7,070	7,706	23,448	3,970	3,538	3,279	10,787	390	319	317	1,026
1,661	1,381	1,454	4,496	1,101	977	1,121	3,199	38	33	33	104
133,574	110,068	112,180	355,822	75,602	65,345	64,749	205,696	5,726	4,791	4,603	15,120
ILLAWARRA STATISTICAL DIVISION											
8,279	7,222	8,702	24,203	5,929	5,092	5,658	16,679	272	233	279	785
1,466	1,242	1,508	4,216	910	808	924	2,642	43	33	41	117
24,516	19,441	25,528	69,485	15,893	12,983	14,104	42,980	789	656	824	2,269
24,319	18,912	15,531	58,762	14,669	11,951	10,479	37,099	1,318	1,132	857	3,307
22,243	20,408	22,098	64,749	11,512	11,091	11,988	34,591	1,214	1,203	1,140	3,556
80,823	67,225	73,367	221,415	48,913	41,925	43,153	133,991	3,636	3,257	3,140	10,034

TABLE 7 — HOTELS, MOTELS AND GUEST HOUSES WITH FACILITIES BY STATISTICAL DIVISION,
NEW SOUTH WALES—continued

Particulars	North Western and Far West (SDs)			Central West (SD)			South Eastern (SD)		
	Licensed hotels	Motels, etc.	Total	Licensed hotels	Motels, etc.	Total	Licensed hotels	Motels, etc.	Total
ESTABLISHMENTS, CAPACITY AND EMPLOYMENT									
<i>December quarter 1993—</i>									
Establishments	13	109	122	14	77	91	28	193	221
Guest rooms	254	2,457	2,711	416	1,708	2,124	991	4,315	5,306
Bed spaces	685	7,789	8,474	1,133	5,267	6,400	4,043	13,790	17,833
Employment (persons)	214	892	1,106	337	612	949	387	1,115	1,502
<i>December quarter 1994—</i>									
Establishments	13	110	123	13	77	90	29	196	225
Guest rooms	239	2,476	2,715	377	1,743	2,120	1,074	4,331	5,405
Bed spaces	642	7,775	8,417	1,023	5,316	6,339	4,293	13,853	18,146
Employment (persons)	158	872	1,030	236	710	946	292	1,110	1,402
ROOM NIGHTS OCCUPIED ('000)									
<i>December quarter 1993</i>	9.0	122.2	131.2	18.5	81.9	100.5	13.1	146.6	159.7
<i>1994—</i>									
October	3.1	47.6	50.7	6.0	32.1	38.1	5.6	59.7	65.2
November	2.8	35.6	38.4	5.1	27.7	32.9	4.4	50.9	55.2
December	2.2	34.2	36.4	3.5	22.9	26.4	5.3	46.9	52.2
<i>December quarter 1994</i>	8.2	117.3	125.5	14.6	82.8	97.4	15.2	157.5	172.7
ROOM OCCUPANCY RATES (per cent)									
<i>December quarter 1993</i>	38.4	54.1	52.6	48.5	52.1	51.4	16.9	37.0	33.7
<i>1994—</i>									
October	42.3	62.0	60.3	51.1	59.5	58.0	16.7	44.7	39.1
November	39.0	47.9	47.1	45.4	53.0	51.7	13.5	39.6	34.3
December	30.2	44.5	43.3	30.0	42.3	40.2	15.9	35.1	31.3
<i>December quarter 1994</i>	37.1	51.5	50.2	42.1	51.6	49.9	15.4	39.8	34.9
GUEST NIGHTS ('000)									
<i>December quarter 1993</i>	14.2	230.7	244.8	30.3	144.1	174.4	24.8	273.7	298.5
<i>1994—</i>									
October	5.4	93.0	98.4	8.8	58.5	67.4	11.3	108.6	119.9
November	4.0	60.0	64.0	7.6	45.1	52.7	7.4	87.7	95.0
December	3.3	71.0	74.3	5.6	41.9	47.5	10.2	90.4	100.6
<i>December quarter 1994</i>	12.7	224.0	236.7	22.1	145.5	167.6	28.9	286.6	315.5
BED OCCUPANCY RATES (per cent)									
<i>December quarter 1993</i>	22.5	32.2	31.4	29.1	29.7	29.6	8.5	21.7	19.2
<i>1994—</i>									
October	27.1	38.6	37.7	27.9	35.5	34.3	8.5	25.5	21.4
November	21.0	25.7	25.4	24.6	28.3	27.7	5.7	21.4	17.6
December	16.4	29.5	28.5	17.8	25.4	24.2	7.7	21.1	17.9
<i>December quarter 1994</i>	21.5	31.3	30.6	23.4	29.8	28.7	7.3	22.7	19.0
GUEST ARRIVALS ('000)									
<i>December quarter 1993</i>	9.6	169.9	179.6	16.4	105.5	121.9	14.4	179.1	193.5
<i>1994—</i>									
October	3.5	66.5	70.0	4.8	41.9	46.7	5.8	67.2	73.0
November	2.5	42.5	45.0	4.2	33.2	37.4	3.9	53.7	57.6
December	2.2	53.3	55.5	3.4	32.1	35.5	5.8	57.0	62.8
<i>December quarter 1994</i>	8.2	162.4	170.5	12.4	107.2	119.6	15.5	177.9	193.4
AVERAGE LENGTH OF STAY (days)									
<i>December quarter 1993</i>	1.5	1.4	1.4	1.9	1.4	1.4	1.7	1.5	1.5
<i>December quarter 1994</i>	1.6	1.4	1.4	1.8	1.4	1.4	1.9	1.6	1.6
TAKINGS FROM ACCOMMODATION (\$'000)									
<i>December quarter 1993</i>	478	6,957	7,435	863	5,016	5,878	737	8,189	8,927
<i>1994—</i>									
October	159	2,862	3,022	237	2,038	2,275	330	3,279	3,609
November	129	2,047	2,176	195	1,701	1,896	207	2,745	2,952
December	103	2,065	2,168	136	1,373	1,509	329	2,840	3,169
<i>December quarter 1994</i>	391	6,974	7,366	568	5,112	5,680	866	8,864	9,730

AND SELECTED STATISTICAL LOCAL AREAS (a), NEW SOUTH WALES, DECEMBER QUARTER 1994 —continued

Guest nights				Guest arrivals				Takings from accommodation (\$'000)			
Oct.	Nov.	Dec.	Dec. qtr	Oct.	Nov.	Dec.	Dec. qtr	Oct.	Nov.	Dec.	Dec. qtr
RICHMOND — TWEED STATISTICAL DIVISION											
19,399	15,840	16,756	51,995	13,869	10,770	11,842	36,481	565	480	521	1,565
11,846	10,094	11,704	33,644	6,780	5,888	5,997	18,665	419	352	446	1,217
2,833	2,326	2,122	7,281	1,882	1,285	1,319	4,486	79	64	63	206
7,054	5,277	5,876	18,207	4,819	3,777	3,830	12,426	225	189	189	603
22,545	18,748	19,974	61,267	12,669	10,009	10,811	33,489	596	484	545	1,625
1,348	948	1,216	3,512	816	638	720	2,174	27	22	25	74
65,025	53,233	57,648	175,906	40,835	32,367	34,519	107,721	1,910	1,590	1,789	5,290
MID-NORTH COAST STATISTICAL DIVISION											
2,918	1,818	2,563	7,299	1,912	1,329	1,820	5,061	92	54	69	215
72,853	56,552	67,030	196,435	37,355	28,088	33,236	98,679	2,350	1,830	2,378	6,558
11,655	9,544	8,030	29,229	7,591	6,603	6,188	20,382	315	263	208	786
40,720	30,041	39,077	109,838	22,918	16,630	20,247	59,795	1,308	1,043	1,379	3,731
11,942	8,375	10,736	31,053	8,918	6,214	8,741	23,873	289	209	264	762
6,466	4,835	4,798	16,099	3,352	2,592	2,744	8,688	145	115	112	372
7,741	6,200	7,360	21,301	4,559	3,976	4,673	13,208	187	157	188	531
16,785	13,168	15,631	45,584	13,035	10,012	12,277	35,324	409	318	376	1,103
2,525	2,515	2,837	7,877	412	401	437	1,250	205	235	320	760
173,605	133,048	158,062	464,715	100,052	75,845	90,363	266,260	5,301	4,223	5,294	14,819
NORTHERN STATISTICAL DIVISION											
13,641	9,844	13,116	36,601	10,742	7,539	11,010	29,291	471	362	418	1,251
1,552	1,190	1,676	4,418	1,276	930	1,366	3,572	45	40	48	133
5,481	4,238	5,980	15,699	4,891	3,440	5,343	13,674	169	138	178	486
4,077	2,819	3,462	10,358	3,248	2,187	2,707	8,142	127	92	100	319
4,193	3,171	2,889	10,253	2,698	2,285	1,941	6,924	130	108	90	328
10,922	7,538	9,779	28,239	7,221	4,844	6,842	18,907	303	239	244	787
5,023	4,032	5,260	14,315	4,208	3,300	4,646	12,154	164	129	160	453
30,160	19,588	19,539	69,287	19,413	13,995	15,168	48,576	1,043	698	669	2,410
4,865	3,528	4,084	12,477	4,130	3,002	3,604	10,736	137	103	101	341
1,019	719	896	2,634	793	562	749	2,104	20	16	18	53
3,631	2,977	3,538	10,146	2,673	2,101	2,431	7,205	96	80	80	255
84,564	59,644	70,219	214,427	61,293	44,185	55,807	161,285	2,705	2,004	2,105	6,815
NORTH WESTERN AND FAR WEST STATISTICAL DIVISIONS											
2,640	1,755	1,793	6,188	1,985	1,453	1,416	4,854	80	53	56	189
1,786	1,292	1,322	4,400	1,261	901	859	3,021	57	46	42	145
12,185	7,922	5,821	25,928	6,724	4,389	3,880	14,993	422	301	212	935
740	595	574	1,909	583	405	492	1,480	21	21	17	59
3,534	3,531	4,014	11,079	2,864	2,585	2,982	8,431	136	129	136	401
12,568	5,518	10,306	28,392	10,586	4,955	9,693	25,234	304	147	247	698
1,008	709	422	2,139	668	446	322	1,436	30	25	14	68
37,404	24,438	30,987	92,829	26,825	17,578	23,483	67,886	1,184	852	887	2,923
5,094	2,585	4,392	12,071	4,952	2,492	4,271	11,715	111	63	87	262
11,267	8,038	7,491	26,796	6,381	4,623	3,634	14,638	386	308	264	957
2,077	1,649	1,947	5,673	1,588	1,103	979	3,670	50	40	42	132
4,577	3,140	2,283	10,000	2,937	2,018	1,482	6,437	137	109	79	325
1,717	1,618	1,739	5,074	1,370	1,217	1,156	3,743	50	42	50	142
1,776	1,231	1,202	4,209	1,270	818	889	2,977	54	40	35	129
98,373	64,021	74,293	236,687	69,994	44,983	55,538	170,515	3,022	2,176	2,168	7,366

TABLE 8—HOTELS, MOTELS AND GUEST HOUSES WITH FACILITIES: STATISTICAL DIVISIONS

Statistical Divisions and selected Statistical Local Areas	Establish- ments	Guest rooms	Bed spaces	Employ- ment (persons)	Room nights occupied			Room occupancy rates (per cent)				
					Oct.	Nov.	Dec.	Dec. qtr	Oct.	Nov.	Dec.	Dec. qtr
SYDNEY STATISTICAL DIVISION												
Ashfield (A)	6	249	728	66	3,924	3,927	3,881	11,732	50.8	52.6	50.3	51.2
Bankstown (C)	10	351	986	226	7,379	6,831	6,400	20,610	67.8	64.9	58.8	63.8
Blacktown (C)	6	234	742	164	2,976	2,468	3,576	9,020	41.0	35.2	49.3	41.9
Blue Mountains (C)	32	1,083	3,042	836	20,312	15,059	13,676	49,047	60.5	46.3	40.7	49.2
Camden (A)	4	126	393	47	1,657	1,545	1,308	4,510	42.4	40.9	33.5	38.9
Campbelltown (C)	3	122	418	35	2,019	1,630	1,395	5,044	53.4	44.5	36.9	44.9
Gosford (C)	24	818	2,814	733	14,702	12,825	13,347	40,874	58.0	52.3	52.6	54.3
Hawkesbury (C)	12	286	767	160	4,815	4,738	4,133	13,686	54.3	55.2	46.6	52.0
Hornsby (A)	7	232	593	185	4,570	4,679	4,342	13,591	63.5	67.2	60.4	63.7
Lane Cove (A)	7	273	787	150	5,911	6,797	5,404	18,112	69.8	83.0	63.9	72.1
Leichhardt (A)	4	151	413	71	3,576	3,808	3,206	10,590	76.4	84.1	68.5	76.2
Liverpool (C)	6	288	785	81	4,294	3,802	4,438	12,534	48.1	44.0	49.7	47.3
Manly (A)	7	423	1,471	425	10,193	10,209	10,468	30,870	77.7	80.4	79.8	79.3
North Sydney (A)	6	754	1,859	424	15,502	18,305	15,379	49,186	66.3	80.9	65.8	70.9
Parramatta (C)	10	1,013	2,313	698	23,740	24,541	20,329	68,610	75.6	80.8	64.7	73.6
Penrith (C)	7	340	1,105	211	5,892	5,762	5,369	17,023	55.9	56.5	50.9	54.4
Pittwater (A)	4	78	178	182	1,283	1,396	1,456	4,135	53.1	59.7	60.2	57.6
Randwick (C)	12	757	2,489	604	14,191	17,083	15,758	47,032	60.5	75.2	67.1	67.5
Rockdale (A)	4	644	1,566	545	15,483	16,894	14,496	46,873	77.6	87.4	72.6	79.1
Ryde (C)	5	377	914	325	7,835	8,650	7,751	24,236	67.0	76.5	66.3	69.9
South Sydney (C)	36	4,279	11,536	2,257	95,439	99,575	91,493	286,507	71.9	77.6	69.0	72.8
Strathfield (A)	3	93	265	42	1,659	1,579	1,461	4,699	57.5	56.6	50.7	54.9
Sutherland Shire (A)	10	303	768	254	5,131	5,285	5,239	15,655	54.6	58.1	55.8	56.2
Sydney (C) — Inner	23	6,587	15,591	6,425	166,250	179,861	152,052	498,163	81.4	91.0	74.5	82.2
Sydney (C) — Remainder	15	2,439	6,586	1,398	60,165	63,779	56,169	180,113	79.6	87.2	74.3	80.3
Warringah (A)	7	105	297	214	1,583	1,775	1,509	4,867	48.6	56.3	46.4	50.4
Waverley (A)	7	439	1,304	325	10,706	11,148	10,421	32,275	78.7	84.6	76.6	79.9
Wollondilly (A)	3	64	157	34	752	775	582	2,109	37.9	40.4	29.3	35.8
Woollahra (A)	6	426	956	379	9,107	10,170	9,041	28,318	69.0	79.6	68.5	72.3
Wyong (A)	29	577	1,688	352	8,249	7,487	8,143	23,879	46.1	43.3	45.5	45.0
Balance	21	1,334	3,432	1,037	29,164	27,337	24,104	80,605	70.5	68.3	58.3	65.7
<i>Sydney (SD)</i>	<i>336</i>	<i>25,245</i>	<i>66,943</i>	<i>18,885</i>	<i>558,459</i>	<i>579,720</i>	<i>516,326</i>	<i>1,654,505</i>	<i>71.4</i>	<i>76.5</i>	<i>66.0</i>	<i>71.2</i>
HUNTER STATISTICAL DIVISION												
Cessnock (C)	22	409	1,204	325	8,849	6,633	5,137	20,619	69.8	54.1	40.5	54.8
Gloucester (A)	4	87	277	38	1,419	1,101	1,002	3,522	52.6	42.2	37.2	44.0
Great Lakes (A)	31	611	2,032	223	9,420	7,979	8,780	26,179	49.7	43.5	46.4	46.6
Lake Macquarie (C)	20	407	1,208	285	7,577	6,676	6,068	20,321	60.1	54.7	48.1	54.3
Maitland (C)	7	189	533	105	4,235	3,176	2,860	10,271	72.3	56.0	48.8	59.1
Muswellbrook (A)	9	225	674	75	4,439	4,785	3,526	12,750	63.6	70.9	50.6	61.6
Newcastle (C) — Inner & Remainder	19	776	2,155	344	15,304	14,546	11,397	41,247	63.6	62.5	47.4	57.8
Port Stephens (A)	28	814	2,646	594	15,212	13,682	14,073	42,967	60.3	56.0	55.8	57.4
Scone (A)	6	115	340	60	1,697	1,755	1,323	4,775	47.6	50.9	37.1	45.1
Singleton (A)	7	242	736	143	5,476	4,895	4,697	15,068	73.0	67.4	62.6	67.7
Balance	5	63	178	16	899	791	769	2,459	46.0	41.9	39.4	42.4
<i>Hunter (SD)</i>	<i>158</i>	<i>3,938</i>	<i>11,983</i>	<i>2,208</i>	<i>74,527</i>	<i>66,019</i>	<i>59,632</i>	<i>200,178</i>	<i>61.0</i>	<i>55.9</i>	<i>48.8</i>	<i>55.3</i>
ILLAWARRA STATISTICAL DIVISION												
Kiama (A)	10	280	973	136	4,274	3,712	4,130	12,116	49.2	44.2	47.6	47.0
Shellharbour (A)	4	84	235	77	858	757	835	2,450	32.9	30.0	32.1	31.7
Shoalhaven (C)	55	907	2,878	341	12,701	10,880	11,850	35,431	45.2	40.0	42.1	42.5
Wingecarribee (A)	28	735	1,945	399	12,317	10,905	8,265	31,487	54.1	49.5	36.3	46.6
Wollongong (C)	23	783	2,273	571	13,911	14,041	12,626	40,578	57.3	59.8	52.0	56.3
<i>Illawarra (SD)</i>	<i>120</i>	<i>2,789</i>	<i>8,304</i>	<i>1,524</i>	<i>44,061</i>	<i>40,295</i>	<i>37,706</i>	<i>122,062</i>	<i>51.0</i>	<i>48.2</i>	<i>43.6</i>	<i>47.6</i>

For footnotes see end of table.

AND SELECTED STATISTICAL LOCAL AREAS (a), NEW SOUTH WALES, DECEMBER QUARTER 1994 —continued

Guest nights			Guest arrivals					Takings from accommodation (\$'000)			
Oct.	Nov.	Dec.	Dec. qtr	Oct.	Nov.	Dec.	Dec. qtr	Oct.	Nov.	Dec.	Dec. qtr
CENTRAL WEST STATISTICAL DIVISION											
13,053	11,115	7,202	31,370	7,958	7,228	5,038	20,224	543	445	274	1,261
7,440	4,923	7,141	19,504	6,861	4,371	6,590	17,822	194	144	179	518
825	1,018	581	2,424	508	594	325	1,427	26	37	16	79
5,897	4,227	4,199	14,323	4,801	3,451	3,329	11,581	187	148	126	461
4,364	2,732	3,151	10,247	3,315	2,178	2,354	7,847	140	104	100	344
1,598	879	985	3,462	1,039	640	641	2,320	41	29	30	100
4,461	3,721	3,078	11,260	2,578	2,453	2,065	7,096	143	140	117	399
3,831	2,542	1,894	8,267	2,337	1,699	1,152	5,188	148	99	71	318
15,152	13,106	10,503	38,761	9,450	8,722	7,677	25,849	550	497	361	1,408
9,647	7,375	7,788	24,810	7,225	5,535	5,903	18,663	266	225	211	703
1,109	1,067	969	3,145	623	525	441	1,589	36	29	25	90
67,377	52,705	47,491	167,573	46,695	37,396	35,515	119,606	2,275	1,896	1,509	5,680
SOUTH EASTERN STATISTICAL DIVISION											
25,092	20,626	23,212	68,930	14,212	11,486	13,583	39,281	655	574	697	1,925
7,784	5,599	5,708	19,091	4,899	3,632	3,665	12,196	221	175	175	571
21,689	19,129	22,967	63,785	13,126	11,400	12,782	37,308	669	591	713	1,972
12,071	10,797	8,636	31,504	9,206	7,331	7,092	23,629	368	332	254	954
19,501	14,259	12,018	45,778	10,608	7,666	6,981	25,255	657	493	413	1,563
14,572	6,687	12,650	33,909	6,600	3,567	6,349	16,516	442	198	420	1,059
1,216	1,247	1,022	3,485	771	320	529	1,620	31	45	37	113
6,044	4,901	5,447	16,392	4,933	4,127	4,897	13,957	184	154	160	498
2,347	3,649	2,318	8,314	1,918	2,358	1,830	6,106	82	130	78	289
9,598	8,145	6,590	24,333	6,744	5,695	5,105	17,544	301	261	222	784
119,914	95,039	100,568	315,521	73,017	57,582	62,813	193,412	3,609	2,952	3,169	9,730
MURRUMBIDGEE STATISTICAL DIVISION											
622	450	623	1,695	359	265	391	1,015	15	12	15	42
2,757	2,192	1,490	6,439	1,847	1,601	1,210	4,658	90	77	52	219
7,456	6,816	6,053	20,325	4,831	4,046	3,235	12,112	278	264	212	754
5,262	4,199	4,314	13,775	4,844	3,773	3,976	12,593	133	111	108	352
4,110	3,286	4,577	11,973	3,689	2,909	4,104	10,702	132	114	138	384
6,202	3,982	5,824	16,008	5,727	3,666	5,593	14,986	158	108	140	407
1,487	1,045	748	3,280	784	651	517	1,952	37	25	21	83
4,111	3,851	3,721	11,683	2,822	2,631	2,350	7,803	131	126	110	367
23,719	20,231	17,599	61,549	14,948	12,967	11,396	39,311	935	848	709	2,492
4,301	3,672	3,853	11,826	2,791	2,376	2,401	7,568	132	123	121	375
60,027	49,724	48,802	158,553	42,642	34,885	35,173	112,700	2,041	1,808	1,626	5,475
MURRAY STATISTICAL DIVISION											
47,274	36,582	34,015	117,871	28,773	23,376	21,053	73,202	1,739	1,408	1,182	4,329
2,957	2,086	2,765	7,808	2,458	1,566	2,442	6,466	79	59	76	215
14,033	10,590	7,704	32,327	7,630	5,732	4,581	17,943	371	279	201	851
14,803	12,274	12,548	39,625	7,635	6,353	5,565	19,553	400	339	282	1,021
5,455	4,211	4,002	13,668	4,195	3,257	2,949	10,401	152	122	104	377
3,089	2,400	3,108	8,597	2,680	2,153	2,918	7,751	73	58	67	198
2,412	1,688	1,907	6,007	1,526	1,036	1,278	3,840	90	57	88	235
1,281	812	1,326	3,419	1,157	778	1,215	3,150	26	19	27	71
11,539	11,338	9,348	32,225	6,539	6,218	5,376	18,133	409	400	318	1,127
7,243	5,987	4,508	17,738	4,778	3,919	3,075	11,772	179	160	114	453
7,519	5,382	3,692	16,593	4,075	2,671	1,949	8,695	152	122	92	366
1,288	970	1,100	3,358	958	784	901	2,643	39	31	35	106
118,893	94,320	86,023	299,236	72,404	57,843	53,302	183,549	3,710	3,055	2,585	9,350
NEW SOUTH WALES											
1,944,523	1,720,113	1,745,356	5,409,992	1,063,180	925,998	945,834	2,935,012	96,267	93,195	85,436	274,898

TABLE 8 — HOTELS, MOTELS AND GUEST HOUSES WITH FACILITIES: STATISTICAL DIVISIONS

Statistical Divisions and selected Statistical Local Areas	Establish- ments	Guest rooms	Bed spaces	Employ- ment (persons)	Room nights occupied			Room occupancy rates (per cent)				
					Oct.	Nov.	Dec.	Dec. qtr	Oct.	Nov.	Dec.	Dec. qtr
RICHMOND — TWEED STATISTICAL DIVISION												
Ballina (A)	26	480	1,522	163	10,362	9,045	8,185	27,592	69.6	62.8	55.0	62.5
Byron (A)	23	314	1,060	130	5,722	5,142	5,436	16,300	58.8	54.6	55.8	56.4
Casino (A)	5	102	311	35	1,727	1,497	1,358	4,582	54.6	48.9	42.9	48.8
Lismore (C)	12	273	825	75	4,153	3,454	3,474	11,081	49.1	42.2	41.0	44.1
Tweed (A) Parts A & B	37	714	2,281	253	12,213	10,234	9,945	32,392	55.2	47.8	44.9	49.3
Balance	4	44	138	13	677	547	565	1,789	49.6	41.4	41.4	44.2
<i>Richmond — Tweed (SD)</i>	<i>107</i>	<i>1,927</i>	<i>6,137</i>	<i>669</i>	<i>34,854</i>	<i>29,919</i>	<i>28,963</i>	<i>93,736</i>	<i>58.3</i>	<i>51.8</i>	<i>48.5</i>	<i>52.9</i>
MID-NORTH COAST STATISTICAL DIVISION												
Bellingen (A)	6	90	271	36	1,559	963	1,186	3,708	55.9	35.7	42.5	44.8
Coffs Harbour (C)	52	1,465	4,893	916	31,730	26,358	27,755	85,843	69.9	60.0	61.1	63.7
Grafton (C)	15	316	868	115	7,063	6,287	4,961	18,311	72.1	66.3	50.6	63.0
Hastings (A)	44	941	3,033	426	19,930	16,538	17,893	54,361	68.3	58.6	61.3	62.8
Kempsey (A)	17	372	1,075	123	5,991	4,532	4,981	15,504	52.0	40.6	43.2	45.3
Maclean (A)	13	178	619	47	2,973	2,407	2,179	7,559	53.9	45.1	39.5	46.2
Nambucca (A)	14	239	779	103	4,000	3,398	3,658	11,056	54.0	47.4	49.4	50.3
Taree, Greater (C)	27	460	1,415	130	8,091	6,523	7,250	21,864	56.7	47.3	50.8	51.7
Balance	4	69	197	71	1,350	1,377	1,418	4,145	63.1	66.5	66.3	65.3
<i>Mid-North Coast (SD)</i>	<i>192</i>	<i>4,130</i>	<i>13,150</i>	<i>1,967</i>	<i>82,687</i>	<i>68,383</i>	<i>71,281</i>	<i>222,351</i>	<i>64.6</i>	<i>55.2</i>	<i>55.7</i>	<i>58.5</i>
NORTHERN STATISTICAL DIVISION												
Armidale (C)	17	425	1,361	168	7,538	6,092	6,500	20,130	57.2	47.8	49.3	51.5
Dumaresq (A)	3	43	145	24	832	721	838	2,391	62.4	55.9	62.9	60.4
Glen Innes (A)	10	201	594	72	3,199	2,727	3,142	9,068	51.3	45.2	50.4	49.0
Gunnedah (A)	7	139	425	36	2,339	1,793	1,860	5,992	54.3	43.0	43.2	46.9
Inverell (A) Parts A & B	6	131	350	46	2,564	2,141	1,656	6,361	63.1	54.5	40.8	52.8
Moree Plains (A)	15	410	1,229	90	5,996	4,655	4,768	15,419	47.2	37.8	37.5	40.9
Narrabri (A)	11	190	588	60	2,930	2,579	2,736	8,245	49.7	45.2	46.5	47.2
Tamworth (C)	29	756	2,433	299	15,883	11,264	10,439	37,586	67.8	49.7	44.5	54.0
Tenterfield (A)	8	158	451	59	2,812	2,202	2,063	7,077	57.4	46.5	42.1	48.7
Uralla (A)	3	45	116	17	592	444	469	1,505	42.4	32.9	33.6	36.4
Balance	15	191	542	52	2,135	1,906	2,015	6,056	36.1	33.3	34.0	34.5
<i>Northern (SD)</i>	<i>124</i>	<i>2,689</i>	<i>8,234</i>	<i>923</i>	<i>46,820</i>	<i>36,524</i>	<i>36,486</i>	<i>119,830</i>	<i>56.2</i>	<i>45.3</i>	<i>43.8</i>	<i>48.4</i>
NORTH WESTERN AND FAR WEST STATISTICAL DIVISIONS												
Bogan (A)	5	114	300	37	1,772	1,238	1,116	4,126	50.1	36.2	31.6	39.3
Bourke (A)	4	63	178	15	1,083	878	827	2,788	55.5	46.5	42.3	48.1
Broken Hill (C)	13	322	915	92	6,926	4,855	3,153	14,934	69.4	50.3	31.6	50.4
Central Darling (A)	3	38	109	12	413	391	311	1,115	35.1	34.3	26.4	31.9
Cobar (A)	7	173	504	81	2,404	2,763	2,952	8,119	44.8	53.2	55.0	51.0
Coonabarabran (A)	11	272	920	101	5,393	2,770	3,968	12,131	64.0	33.9	47.1	48.5
Coonamble (A)	3	51	133	13	621	554	323	1,498	39.3	36.2	20.4	31.9
Dubbo (C)	32	810	2,665	342	18,223	14,075	13,632	45,930	72.6	57.9	54.3	61.6
Gilgandra (A)	9	147	476	34	2,377	1,381	1,819	5,577	52.2	31.3	39.9	41.2
Mudgee (A)	13	332	1,115	160	5,795	4,662	4,045	14,502	56.3	46.8	39.3	47.5
Narromine (A)	5	79	219	42	1,142	993	1,164	3,299	46.6	41.9	47.5	45.4
Walgett (A)	7	166	464	63	2,551	2,021	1,413	5,985	49.6	40.6	27.5	39.2
Wellington (A)	5	73	210	15	934	885	915	2,734	41.3	40.4	40.4	40.7
Balance	6	75	209	23	1,095	885	792	2,772	47.1	39.3	34.1	40.2
<i>North Western (SD) and Far West (SD)</i>	<i>123</i>	<i>2,715</i>	<i>8,417</i>	<i>1,030</i>	<i>50,729</i>	<i>38,351</i>	<i>36,430</i>	<i>125,510</i>	<i>60.3</i>	<i>47.1</i>	<i>43.3</i>	<i>50.2</i>

For footnotes see end of table.

TABLE 9 — HOLIDAY FLATS, UNITS AND HOUSES BY STATISTICAL DIVISION,
NEW SOUTH WALES—continued

Particulars	Mid - North Coast (SD)			South Eastern (SD)			Murray (SD)	Balance	New South Wales		
	Real estate agents	Other letting entities	Total	Real estate agents	Other letting entities	Total	Total	Total	Real estate agents	Other letting entities	Total
LETTING ENTITIES, CAPACITY AND EMPLOYMENT											
December quarter 1993—											
Letting entities	26	66	92	23	97	120	18	9	125	284	409
Flats, units and houses											
Single bedroom	92	269	361	87	232	319	104	69	395	1,588	1,983
Multiple bedroom	1,132	416	1,548	1,442	793	2,235	84	20	6,380	2,077	8,457
Total flats, units and houses	1,224	685	1,909	1,529	1,025	2,554	188	89	6,775	3,665	10,440
Bed spaces	5,290	2,878	8,168	8,066	4,509	12,575	762	318	33,914	14,903	48,817
Employment (persons) (a)	—	206	206	—	311	311	161	21	—	1,105	1,105
December quarter 1994—											
Letting entities	24	64	88	23	97	120	19	10	129	282	411
Flats, units and houses											
Single bedroom	86	257	343	81	248	329	102	80	381	1,655	2,036
Multiple bedroom	1,114	463	1,577	1,348	801	2,149	95	23	6,469	2,254	8,723
Total flats, units and houses	1,200	720	1,920	1,429	1,049	2,478	197	103	6,850	3,909	10,759
Bed spaces	5,201	3,027	8,228	7,544	4,586	12,130	836	388	34,527	15,881	50,408
Employment (persons) (a)	—	195	195	—	288	288	165	24	—	1,151	1,151
UNIT NIGHTS OCCUPIED ('000)											
December quarter 1993	52.5	35.4	87.9	24.9	42.9	67.8	10.5	3.9	202.4	190.4	392.8
1994—											
October	17.1	13.2	30.3	7.1	14.9	22.0	4.2	1.9	63.4	71.7	135.1
November	12.9	11.4	24.3	6.8	13.6	20.4	3.7	1.2	58.6	67.1	125.7
December	17.9	12.4	30.2	11.8	15.1	26.9	2.8	1.4	92.2	69.2	161.4
December quarter 1994	47.8	37.0	84.8	25.7	43.6	69.3	10.6	4.5	214.2	208.0	422.2
UNIT OCCUPANCY RATES (per cent)											
December quarter 1993	46.6	56.2	50.0	17.7	45.8	28.9	60.8	47.3	32.5	56.6	41.0
1994—											
October	45.9	59.3	50.9	16.1	45.7	28.6	68.2	58.1	29.9	59.2	40.5
November	35.8	52.9	42.2	15.8	43.6	27.5	62.1	39.3	28.5	57.4	39.0
December	48.0	55.4	50.8	26.7	46.5	35.1	45.5	43.4	43.4	57.1	48.4
December quarter 1994	43.3	55.9	48.0	19.5	45.3	30.4	58.6	47.0	34.0	57.9	42.7
UNIT LETTINGS ('000)											
December quarter 1993	5.5	7.0	12.5	3.3	8.9	12.2	3.0	1.8	26.7	44.1	70.7
1994—											
October	2.3	2.8	5.0	1.1	3.2	4.3	1.2	0.8	9.1	18.1	27.2
November	1.6	2.3	3.9	1.3	2.8	4.1	1.1	0.5	8.3	16.7	24.9
December	2.6	2.3	4.9	2.4	3.2	5.6	0.9	0.7	14.0	17.5	31.5
December quarter 1994	6.4	7.4	13.8	4.7	9.2	13.9	3.2	1.9	31.4	52.2	83.6
AVERAGE LENGTH OF STAY (days)											
December quarter 1993	9.6	5.1	7.0	7.6	4.8	5.6	3.4	2.1	7.6	4.3	5.6
1994—											
October	7.6	4.8	6.1	6.7	4.6	5.1	3.5	2.5	7.0	4.0	5.0
November	8.0	4.9	6.2	5.3	4.9	5.0	3.3	2.5	7.1	4.0	5.0
December	6.9	5.4	6.2	5.0	4.7	4.8	3.1	2.1	6.6	4.0	5.1
December quarter 1994	7.4	5.0	6.1	5.4	4.7	5.0	3.3	2.3	6.8	4.0	5.0
TAKINGS FROM ACCOMMODATION (\$'000)											
December quarter 1993	2,204	1,852	4,056	1,249	2,126	3,375	517	172	10,486	12,963	23,450
1994—											
October	515	626	1,141	306	681	987	208	82	2,736	4,925	7,660
November	400	541	942	271	629	899	205	50	2,444	4,809	7,253
December	695	771	1,466	728	991	1,719	157	60	5,712	5,683	11,396
December quarter 1994	1,611	1,938	3,549	1,305	2,301	3,606	570	192	10,892	15,417	26,309

(a) Employment numbers exclude real estate agents and their employees.

TABLE 8—HOTELS, MOTELS AND GUEST HOUSES WITH FACILITIES: STATISTICAL DIVISIONS

Statistical Divisions and selected Statistical Local Areas	Establish- ments	Guest rooms	Bed spaces	Employ- ment (persons)	Room nights occupied				Room occupancy rates (per cent)			
					Oct.	Nov.	Dec.	Dec. qtr	Oct.	Nov.	Dec.	Dec. qtr
CENTRAL WEST STATISTICAL DIVISION												
Bathurst (C)	13	379	1,143	168	7,408	6,740	4,136	18,284	63.1	59.3	35.2	52.4
Bland (A)	13	273	873	73	3,675	2,898	3,347	9,920	43.4	35.4	39.5	39.5
Cabonne (A) Parts A, B & C	3	36	111	9	470	569	328	1,367	42.1	52.7	29.4	41.3
Cowra (A)	10	181	529	96	3,322	2,623	2,203	8,148	59.2	48.3	39.3	48.9
Forbes (A)	7	156	423	52	2,470	1,751	1,716	5,937	51.1	37.4	35.5	41.4
Lachlan (A)	5	68	178	17	934	639	640	2,213	44.3	31.3	30.4	35.4
Lithgow, Greater (C)	6	147	443	67	2,701	2,611	2,051	7,363	59.3	59.2	45.0	54.4
Oberon (A)	5	110	360	120	1,782	1,374	943	4,099	52.3	41.6	27.7	40.5
Orange (C)	11	437	1,282	228	9,263	8,306	5,986	23,555	68.4	63.4	44.2	58.6
Parkes (A)	14	279	837	106	5,386	4,631	4,316	14,333	62.3	55.3	49.9	55.8
Balance	3	54	160	10	702	733	721	2,156	41.9	45.2	43.1	43.4
<i>Central West (SD)</i>	<i>90</i>	<i>2,120</i>	<i>6,339</i>	<i>946</i>	<i>38,113</i>	<i>32,875</i>	<i>26,387</i>	<i>97,375</i>	<i>58.0</i>	<i>51.7</i>	<i>40.2</i>	<i>49.9</i>
SOUTH EASTERN STATISTICAL DIVISION												
Bega Valley (A)	43	851	2,663	280	13,358	11,457	11,139	35,954	50.6	44.9	42.2	45.9
Cooma — Monaro (A)	15	370	1,083	93	4,118	3,312	3,377	10,807	35.9	29.8	29.4	31.7
Eurobodalla (A)	39	777	2,446	260	12,203	10,919	11,728	34,850	50.7	46.8	48.7	48.8
Goulburn (C)	14	378	1,027	132	6,557	6,298	4,508	17,363	56.0	55.5	38.5	49.9
Queanbeyan (C)	17	511	1,513	135	11,723	9,031	7,086	27,840	74.0	58.9	44.7	59.2
Snowy River (A) (b)	64	1,833	7,280	227	6,125	3,208	5,714	15,047	10.9	6.0	10.2	9.1
Tailaganda (A)	4	41	134	15	659	994	676	2,329	51.8	80.8	53.2	61.7
Yass (A)	9	199	606	64	3,170	2,823	2,692	8,685	51.4	47.3	43.6	47.4
Young (A)	6	108	295	43	1,458	2,172	1,405	5,035	43.5	67.0	42.0	50.7
Balance	14	337	1,099	153	5,872	4,999	3,910	14,781	56.2	49.4	37.4	47.7
<i>South Eastern (SD)</i>	<i>225</i>	<i>5,405</i>	<i>18,146</i>	<i>1,402</i>	<i>65,243</i>	<i>55,213</i>	<i>52,235</i>	<i>172,691</i>	<i>39.1</i>	<i>34.3</i>	<i>31.3</i>	<i>34.9</i>
MURRUMBIDGEE STATISTICAL DIVISION												
Carrathool (A)	3	34	107	7	366	314	370	1,050	34.7	30.8	35.1	33.6
Cootamundra (A)	4	80	224	25	1,547	1,352	848	3,747	62.4	56.3	34.2	50.9
Griffith (C)	9	268	760	88	4,931	4,927	3,664	13,522	59.4	61.3	44.1	54.8
Gundagai (A)	6	111	352	37	2,569	2,239	2,015	6,823	74.7	67.2	58.6	66.8
Hay (A)	7	146	440	45	2,367	2,164	2,456	6,987	52.3	49.4	54.3	52.0
Narrandera (A)	11	237	744	66	3,138	2,242	2,629	8,009	42.7	31.5	35.8	36.7
Temora (A)	4	45	120	19	878	639	424	1,941	62.9	47.3	30.4	46.9
Tumut (A)	9	182	582	54	2,585	2,595	2,307	7,487	45.8	47.5	40.9	44.7
Wagga Wagga (C)	26	756	2,263	342	14,847	13,183	10,933	38,963	63.4	58.1	46.7	56.0
Balance	10	168	471	65	2,783	2,570	2,377	7,730	53.4	51.0	45.6	50.0
<i>Murrumbidgee (SD)</i>	<i>89</i>	<i>2,027</i>	<i>6,063</i>	<i>748</i>	<i>36,011</i>	<i>32,225</i>	<i>28,023</i>	<i>96,259</i>	<i>57.3</i>	<i>53.0</i>	<i>44.6</i>	<i>51.6</i>
MURRAY STATISTICAL DIVISION												
Albury (C)	40	1,378	4,104	538	27,200	22,288	18,291	67,779	63.7	53.9	42.8	53.5
Balranald (A)	7	105	335	22	1,491	1,217	1,324	4,032	45.8	38.6	40.7	41.7
Berrigan (A)	24	446	1,390	127	6,962	5,236	3,801	15,999	50.4	39.1	27.5	39.0
Corowa (A)	23	434	1,423	141	7,321	6,155	5,804	19,280	54.4	47.3	43.1	48.3
Deniliquin (A)	11	209	693	56	3,366	2,960	2,319	8,645	52.0	47.2	35.8	45.0
Holbrook (A)	7	111	340	32	1,577	1,289	1,431	4,297	45.8	38.7	41.6	42.1
Hume (A)	4	190	714	53	1,447	1,032	1,253	3,732	24.6	18.1	21.3	21.4
Jerilderie (A)	5	53	153	14	761	561	701	2,023	46.3	35.3	42.7	41.5
Murray (A)	10	278	1,054	121	5,607	5,344	4,286	15,237	65.1	64.1	49.7	59.6
Wakool (A)	10	190	583	49	3,530	3,099	2,225	8,854	59.9	54.4	37.8	50.7
Wentworth (A)	10	209	620	59	3,930	2,985	2,036	8,951	60.7	47.6	31.4	46.6
Balance	3	57	173	24	753	603	599	1,955	42.6	35.3	33.9	37.3
<i>Murray (SD)</i>	<i>154</i>	<i>3,660</i>	<i>11,582</i>	<i>1,236</i>	<i>63,945</i>	<i>52,769</i>	<i>44,070</i>	<i>160,784</i>	<i>56.4</i>	<i>48.1</i>	<i>38.8</i>	<i>47.8</i>
NEW SOUTH WALES												
<i>NEW SOUTH WALES</i>	<i>1,718</i>	<i>56,645</i>	<i>165,298</i>	<i>31,538</i>	<i>1,095,449</i>	<i>1,032,293</i>	<i>937,539</i>	<i>3,065,281</i>	<i>62.4</i>	<i>60.8</i>	<i>53.4</i>	<i>58.8</i>

(a) Statistical Local Areas are not shown separately in this table when data for them are confidential or nil. Data for these are aggregated and shown as the Balance of the particular Statistical Division. (b) Snow field resorts are included continuously as capacity (potentially) available irrespective of any off-season closures. The average occupancy rates of establishments in Snowy River (S) actually remaining open during the snow fields off season, therefore, are significantly higher than the overall rates published.

AND STATISTICAL LOCAL AREAS (a), NEW SOUTH WALES, DECEMBER QUARTER 1994

Unit occupancy rates (per cent)				Unit lettings				Average length of stay (days)	Takings from accommodation (\$ '000)			
Oct.	Nov.	Dec.	Dec. qtr	Oct.	Nov.	Dec.	Dec. qtr	Dec. qtr	Oct.	Nov.	Dec.	Dec. qtr
40.5	26.0	32.8	33.2	650	458	473	1,581	3.5	157	104	117	378
14.0	13.2	32.7	20.0	456	383	711	1,550	6.3	133	106	431	670
73.0	79.6	74.6	75.7	684	687	783	2,154	4.9	310	367	412	1,089
80.3	86.3	77.5	81.3	2,099	2,218	2,174	6,491	3.7	747	803	780	2,330
64.1	68.6	62.7	65.1	1,668	1,736	1,805	5,209	2.4	411	410	410	1,252
32.2	27.5	38.0	32.6	905	884	987	2,776	3.9	213	152	336	701
70.2	74.6	70.5	71.8	2,119	2,110	2,314	6,543	4.4	973	1,015	1,132	3,120
49.1	49.6	53.6	50.8	8,581	8,476	9,247	26,304	3.9	2,944	2,958	3,618	9,520
35.9	40.8	57.5	44.8	1,937	1,890	3,004	6,831	6.7	475	505	1,048	2,028
31.5	33.9	55.8	40.5	1,324	1,332	2,457	5,113	6.6	491	473	1,166	2,130
55.1	47.4	52.1	51.6	388	322	361	1,071	2.7	126	110	132	368
34.5	38.0	56.6	43.1	3,649	3,544	5,822	13,015	6.3	1,092	1,089	2,347	4,527
18.4	17.7	38.7	25.0	829	884	1,650	3,363	4.8	244	249	684	1,177
48.4	47.6	53.5	49.9	584	571	633	1,788	8.4	212	188	336	736
60.8	57.3	62.3	60.2	1,895	1,516	1,666	5,077	5.4	637	539	811	1,987
36.3	37.8	46.4	40.2	418	368	453	1,239	8.2	113	136	197	445
51.0	49.5	55.7	52.1	2,897	2,455	2,752	8,104	6.5	962	862	1,344	3,168
64.7	54.1	52.6	57.2	1,683	1,333	1,209	4,225	5.0	385	300	417	1,102
16.2	17.7	27.9	20.7	51	43	59	153	3.8	5	6	11	23
60.0	38.9	50.7	50.0	1,766	1,129	1,775	4,670	6.1	315	248	401	964
43.5	44.2	52.9	46.9	853	738	917	2,508	7.2	211	159	245	615
30.7	28.3	43.6	34.3	354	346	533	1,233	8.4	119	108	202	430
50.4	39.3	42.8	44.2	79	58	73	210	5.6	22	9	22	53
46.8	62.6	69.2	59.5	216	287	312	815	6.2	85	111	167	363
50.9	42.2	50.8	48.0	5,002	3,934	4,878	13,814	6.1	1,141	942	1,466	3,549
40.5	38.7	44.0	41.1	2,175	1,846	2,317	6,338	6.5	610	537	836	1,983
21.4	20.1	32.5	24.7	1,451	1,667	2,458	5,576	3.7	217	226	634	1,077
15.7	16.4	20.4	17.5	662	538	811	2,011	4.0	160	136	249	546
28.6	27.5	35.1	30.4	4,288	4,051	5,586	13,925	5.0	987	899	1,719	3,606
68.4	47.9	29.1	48.5	195	146	86	427	3.8	32	23	16	70
67.9	72.5	56.2	65.4	567	599	563	1,729	3.3	98	120	89	307
68.6	55.1	39.1	54.2	434	367	242	1,043	3.2	78	62	52	192
68.2	62.1	45.5	58.6	1,196	1,112	891	3,199	3.3	208	205	157	570
58.1	39.3	43.4	47.0	750	480	665	1,895	2.3	82	50	60	192
40.5	39.0	48.4	42.7	27,192	24,936	31,491	83,619	5.0	7,660	7,253	11,396	26,309

TABLE 9 — HOLIDAY FLATS, UNITS AND HOUSES BY STATISTICAL DIVISION,
NEW SOUTH WALES

Particulars	Sydney (SD)			Hunter (SD)			Illawarra (SD)			Richmond - Tweed (SD)		
	Real estate agents	Other letting entities	Total	Real estate agents	Other letting entities	Total	Real estate agents	Other letting entities	Total	Real estate agents	Other letting entities	Total
LETTING ENTITIES, CAPACITY AND EMPLOYMENT												
<i>December quarter 1993—</i>												
Letting entities	18	45	63	22	11	33	14	15	29	22	23	45
Flats, units and houses												
Single bedroom	80	791	871	85	13	98	21	54	75	30	56	86
Multiple bedroom	927	390	1,317	1,766	78	1,844	525	83	608	588	213	801
<i>Total flats, units and houses</i>	<i>1,007</i>	<i>1,181</i>	<i>2,188</i>	<i>1,851</i>	<i>91</i>	<i>1,942</i>	<i>546</i>	<i>137</i>	<i>683</i>	<i>618</i>	<i>269</i>	<i>887</i>
Bed spaces	5,390	4,121	9,511	9,063	442	9,505	2,967	669	3,636	3,138	1,204	4,342
Employment (persons) (a)	—	258	258	—	26	26	—	42	42	—	80	80
<i>December quarter 1994—</i>												
Letting entities	18	43	61	23	12	35	15	15	30	26	22	48
Flats, units and houses												
Single bedroom	59	771	830	105	11	116	15	59	74	35	127	162
Multiple bedroom	906	450	1,356	1,851	101	1,952	552	82	634	698	239	937
<i>Total flats, units and houses</i>	<i>965</i>	<i>1,221</i>	<i>2,186</i>	<i>1,956</i>	<i>112</i>	<i>2,068</i>	<i>567</i>	<i>141</i>	<i>708</i>	<i>733</i>	<i>366</i>	<i>1,099</i>
Bed spaces	5,278	4,167	9,445	9,759	616	10,375	3,125	622	3,747	3,620	1,639	5,259
Employment (persons) (a)	—	238	238	—	43	43	—	51	51	—	147	147
UNIT NIGHTS OCCUPIED ('000)												
<i>December quarter 1993</i>	<i>22.5</i>	<i>72.9</i>	<i>95.3</i>	<i>61.1</i>	<i>4.1</i>	<i>65.1</i>	<i>12.4</i>	<i>4.9</i>	<i>17.3</i>	<i>29.1</i>	<i>15.8</i>	<i>44.9</i>
<i>1994—</i>												
October	5.7	27.6	33.3	20.6	1.6	22.1	2.4	1.6	4.0	10.6	6.8	17.4
November	4.7	27.8	32.5	22.1	1.5	23.6	2.2	1.5	3.8	9.8	6.5	16.3
December	9.6	26.7	36.3	34.6	1.6	36.3	6.6	1.9	8.5	11.7	7.3	19.0
<i>December quarter 1994</i>	<i>20.1</i>	<i>82.0</i>	<i>102.1</i>	<i>77.3</i>	<i>4.7</i>	<i>82.0</i>	<i>11.2</i>	<i>5.1</i>	<i>16.3</i>	<i>32.1</i>	<i>20.6</i>	<i>52.7</i>
UNIT OCCUPANCY RATES (per cent)												
<i>December quarter 1993</i>	<i>24.3</i>	<i>67.1</i>	<i>47.4</i>	<i>36.1</i>	<i>48.8</i>	<i>36.7</i>	<i>24.8</i>	<i>38.7</i>	<i>27.6</i>	<i>51.1</i>	<i>63.9</i>	<i>55.0</i>
<i>1994—</i>												
October	19.1	72.8	49.1	34.0	44.8	34.5	13.7	37.6	18.4	46.5	59.9	51.0
November	16.3	75.9	49.6	37.7	43.2	38.0	13.1	36.2	17.7	44.8	59.0	49.5
December	32.2	70.4	53.6	57.1	47.4	56.6	37.5	43.4	38.7	51.4	64.4	55.7
<i>December quarter 1994</i>	<i>22.6</i>	<i>73.0</i>	<i>50.8</i>	<i>43.0</i>	<i>45.2</i>	<i>43.1</i>	<i>21.5</i>	<i>39.1</i>	<i>25.0</i>	<i>47.6</i>	<i>61.1</i>	<i>52.1</i>
UNIT LETTINGS ('000)												
<i>December quarter 1993</i>	<i>3.5</i>	<i>18.5</i>	<i>22.0</i>	<i>8.8</i>	<i>1.0</i>	<i>9.8</i>	<i>2.3</i>	<i>1.3</i>	<i>3.5</i>	<i>3.3</i>	<i>2.5</i>	<i>5.8</i>
<i>1994—</i>												
October	1.0	7.6	8.6	3.2	0.5	3.6	0.4	0.4	0.8	1.3	1.6	2.9
November	0.7	7.8	8.5	3.1	0.4	3.5	0.5	0.4	0.9	1.1	1.4	2.5
December	1.3	8.0	9.2	5.3	0.5	5.8	1.2	0.5	1.6	1.3	1.5	2.8
<i>December quarter 1994</i>	<i>2.9</i>	<i>23.4</i>	<i>26.3</i>	<i>11.6</i>	<i>1.4</i>	<i>13.0</i>	<i>2.1</i>	<i>1.3</i>	<i>3.4</i>	<i>3.6</i>	<i>4.5</i>	<i>8.1</i>
AVERAGE LENGTH OF STAY (days)												
<i>December quarter 1993</i>	<i>6.4</i>	<i>3.9</i>	<i>4.3</i>	<i>6.9</i>	<i>3.9</i>	<i>6.6</i>	<i>5.5</i>	<i>3.8</i>	<i>4.9</i>	<i>8.8</i>	<i>6.3</i>	<i>7.7</i>
<i>1994—</i>												
October	6.0	3.6	3.9	6.5	3.2	6.1	5.7	4.0	4.9	8.4	4.1	6.0
November	6.6	3.6	3.8	7.1	3.5	6.6	4.6	3.8	4.2	9.2	4.7	6.6
December	7.5	3.3	3.9	6.5	3.4	6.2	5.5	4.2	5.1	9.3	4.9	6.9
<i>December quarter 1994</i>	<i>6.8</i>	<i>3.5</i>	<i>3.9</i>	<i>6.6</i>	<i>3.4</i>	<i>6.3</i>	<i>5.3</i>	<i>4.0</i>	<i>4.8</i>	<i>9.0</i>	<i>4.5</i>	<i>6.5</i>
TAKINGS FROM ACCOMMODATION (\$'000)												
<i>December quarter 1993</i>	<i>1,649</i>	<i>6,713</i>	<i>8,361</i>	<i>3,073</i>	<i>298</i>	<i>3,371</i>	<i>1,067</i>	<i>299</i>	<i>1,366</i>	<i>1,245</i>	<i>987</i>	<i>2,232</i>
<i>1994—</i>												
October	331	2,613	2,944	960	131	1,092	156	88	244	466	495	962
November	229	2,729	2,958	969	119	1,089	156	93	249	419	443	862
December	826	2,793	3,618	2,200	146	2,347	555	129	684	708	636	1,344
<i>December quarter 1994</i>	<i>1,386</i>	<i>8,134</i>	<i>9,520</i>	<i>4,130</i>	<i>397</i>	<i>4,527</i>	<i>867</i>	<i>310</i>	<i>1,177</i>	<i>1,594</i>	<i>1,574</i>	<i>3,168</i>

For footnotes see end of table.

STATISTICAL LOCAL AREAS (a), NEW SOUTH WALES, DECEMBER QUARTER 1994

<i>Site nights occupied</i>				<i>Site occupancy rates (per cent)</i>				<i>Takings from accommodation (\$'000)</i>			
<i>Oct.</i>	<i>Nov.</i>	<i>Dec.</i>	<i>Dec. qtr</i>	<i>Oct.</i>	<i>Nov.</i>	<i>Dec.</i>	<i>Dec. qtr</i>	<i>Oct.</i>	<i>Nov.</i>	<i>Dec.</i>	<i>Dec. qtr</i>
9,039	8,685	9,468	27,192	40.0	39.7	41.9	40.5	65	58	65	187
9,206	9,078	9,245	27,529	64.3	65.5	64.6	64.8	95	86	99	281
40,275	38,764	42,246	121,285	69.9	69.5	73.3	70.9	494	389	508	1,391
9,467	9,190	9,821	28,478	42.3	42.4	43.9	42.9	52	65	61	178
8,169	7,888	8,220	24,277	66.0	65.9	66.5	66.1	122	117	132	371
107,971	103,592	112,633	324,196	70.7	70.1	73.7	71.5	883	789	1,231	2,903
52,885	52,758	56,830	162,473	68.4	70.5	73.5	70.8	840	839	981	2,661
<i>237,012</i>	<i>229,955</i>	<i>248,463</i>	<i>715,430</i>	<i>65.9</i>	<i>66.1</i>	<i>69.1</i>	<i>67.1</i>	<i>2,550</i>	<i>2,343</i>	<i>3,078</i>	<i>7,971</i>
3,922	3,705	3,766	11,393	47.4	46.3	45.5	46.4	44	42	47	134
75,494	72,115	81,859	229,468	59.6	58.8	64.6	61.0	666	582	1,008	2,257
47,451	48,771	55,431	151,653	65.9	70.0	77.0	71.0	474	458	641	1,573
4,144	3,889	3,631	11,664	47.7	46.3	41.8	45.3	34	32	33	99
66,331	63,360	68,629	198,320	67.5	66.6	69.9	68.0	635	606	936	2,176
2,835	2,383	2,712	7,930	66.8	58.0	63.9	62.9	23	19	18	60
13,594	12,348	13,967	39,909	34.6	32.5	35.6	34.2	126	111	135	373
<i>213,771</i>	<i>206,571</i>	<i>229,995</i>	<i>650,337</i>	<i>59.8</i>	<i>59.7</i>	<i>64.3</i>	<i>61.3</i>	<i>2,003</i>	<i>1,850</i>	<i>2,818</i>	<i>6,671</i>
39,382	36,838	41,191	117,411	66.1	63.9	69.1	66.4	287	269	455	1,011
11,545	11,047	13,564	36,156	43.8	43.3	51.4	46.2	98	93	128	320
216,539	213,166	237,308	667,013	66.3	67.5	72.7	68.8	1,642	1,419	2,082	5,143
42,708	41,334	45,586	129,628	71.8	71.8	76.6	73.4	476	529	499	1,504
<i>310,174</i>	<i>302,385</i>	<i>337,649</i>	<i>950,208</i>	<i>65.7</i>	<i>66.2</i>	<i>71.5</i>	<i>67.8</i>	<i>2,504</i>	<i>2,311</i>	<i>3,164</i>	<i>7,978</i>
28,753	26,785	34,350	89,888	56.4	54.3	67.4	59.4	291	257	387	935
21,342	23,899	26,218	71,459	38.5	44.5	47.2	43.4	290	282	503	1,076
9,108	9,031	9,269	27,408	65.9	67.5	67.0	66.8	80	75	78	233
8,581	6,566	11,598	26,745	36.6	29.0	49.5	38.5	57	44	94	194
81,655	77,964	87,628	247,247	69.4	68.5	74.5	70.8	805	722	1,137	2,664
2,281	2,164	2,100	6,545	28.0	27.4	25.8	27.0	22	20	20	62
<i>151,720</i>	<i>146,409</i>	<i>171,163</i>	<i>469,292</i>	<i>56.3</i>	<i>56.1</i>	<i>63.5</i>	<i>58.7</i>	<i>1,545</i>	<i>1,400</i>	<i>2,218</i>	<i>5,164</i>
11,993	11,386	13,442	36,821	47.9	47.0	53.7	49.5	85	74	102	260
39,978	35,050	45,841	120,869	50.9	46.1	58.4	51.9	442	348	561	1,351
45,358	39,644	49,042	134,044	45.3	40.9	49.0	45.1	634	545	882	2,062
16,356	14,463	19,971	50,790	33.5	30.6	40.9	35.1	172	214	220	606
19,763	17,161	24,675	61,599	36.3	32.6	45.4	38.2	261	232	359	851
17,694	14,956	22,433	55,083	38.8	33.9	49.2	40.7	246	155	294	695
30,597	30,853	36,830	98,280	46.6	48.5	56.0	50.4	227	191	319	737
15,665	14,638	17,856	48,159	54.1	52.2	61.7	56.0	137	119	230	486
6,232	5,162	6,251	17,645	40.4	34.6	40.6	38.6	65	52	54	170
<i>203,636</i>	<i>183,313</i>	<i>236,341</i>	<i>623,290</i>	<i>44.0</i>	<i>40.9</i>	<i>51.1</i>	<i>45.4</i>	<i>2,268</i>	<i>1,930</i>	<i>3,020</i>	<i>7,218</i>
1,480	1,259	1,372	4,111	17.3	15.2	16.0	16.2	21	18	19	58
2,605	2,413	2,287	7,305	51.6	49.3	45.3	48.7	29	24	23	76
2,884	2,468	2,721	8,073	22.3	19.7	21.0	21.0	44	35	42	120
2,988	2,915	3,481	9,384	31.5	31.8	36.7	33.3	48	43	58	149
4,837	4,323	4,610	13,770	18.6	17.2	17.7	17.8	64	50	54	169
1,129	1,018	1,128	3,275	26.4	24.6	26.4	25.8	27	24	26	77
16,904	15,199	15,583	47,686	29.4	27.3	27.1	28.0	120	105	105	331
<i>32,827</i>	<i>29,595</i>	<i>31,182</i>	<i>93,604</i>	<i>26.5</i>	<i>24.7</i>	<i>25.2</i>	<i>25.5</i>	<i>354</i>	<i>299</i>	<i>327</i>	<i>980</i>

TABLE 10 — HOLIDAY FLATS, UNITS AND HOUSES: SELECTED STATISTICAL DIVISIONS

Statistical Divisions and Selected Statistical Local Areas	Flats, units and houses				Bed spaces	Employ- ment (persons) (b)	Unit nights occupied			
	Letting entities	Single bedroom	Multiple bedroom	Total			Oct.	Nov.	Dec.	Dec. qtr
Blue Mountains (C)	9	24	155	179	1,043	31	2,246	1,398	1,819	5,463
Gosford (C)	9	14	514	528	2,930	2	2,291	2,093	5,355	9,739
Manly (A)	5	62	89	151	584	22	3,418	3,604	3,493	10,515
South Sydney (C)	8	235	89	324	875	80	8,069	8,384	7,780	24,233
Sydney (C)	7	178	31	209	601	33	4,154	4,301	4,060	12,515
Wyong (A)	11	60	297	357	1,767	19	3,567	2,949	4,206	10,722
Balance	12	257	181	438	1,645	51	9,533	9,804	9,579	28,916
<i>Sydney (SD)</i>	<i>61</i>	<i>830</i>	<i>1,356</i>	<i>2,186</i>	<i>9,445</i>	<i>238</i>	<i>33,278</i>	<i>32,533</i>	<i>36,292</i>	<i>102,103</i>
Great Lakes (A)	19	56	1,047	1,103	5,382	15	12,272	13,493	19,666	45,431
Port Stephens (A)	10	57	847	904	4,614	4	8,832	9,206	15,640	33,678
Balance	6	3	58	61	379	24	1,041	868	986	2,895
<i>Hunter (SD)</i>	<i>35</i>	<i>116</i>	<i>1,952</i>	<i>2,068</i>	<i>10,375</i>	<i>43</i>	<i>22,145</i>	<i>23,567</i>	<i>36,292</i>	<i>82,004</i>
<i>Illawarra (SD)</i>	<i>30</i>	<i>74</i>	<i>634</i>	<i>708</i>	<i>3,747</i>	<i>51</i>	<i>4,044</i>	<i>3,753</i>	<i>8,484</i>	<i>16,281</i>
Ballina (A) and Richmond River (A)	13	18	309	327	1,509	9	4,909	4,669	5,420	14,998
Byron (A)	19	112	384	496	2,438	104	9,353	8,522	9,580	27,455
Tweed (A) Parts A & B	16	32	244	276	1,312	34	3,107	3,129	3,974	10,210
<i>Richmond — Tweed (SD)</i>	<i>48</i>	<i>162</i>	<i>937</i>	<i>1,099</i>	<i>5,259</i>	<i>147</i>	<i>17,369</i>	<i>16,320</i>	<i>18,974</i>	<i>52,663</i>
Coffs Harbour (C)	28	74	326	400	1,683	83	8,018	6,492	6,527	21,037
Greater Taree (C)	4	30	1	31	117	8	156	165	268	589
Hastings (A)	24	61	561	622	2,707	42	11,572	7,263	9,783	28,618
Kempsey (A)	13	71	347	418	1,894	18	5,643	5,506	6,854	18,003
Macleay (A)	8	22	306	328	1,389	5	3,124	2,783	4,429	10,336
Nambucca (A)	3	11	18	29	102	4	453	342	385	1,180
Balance	8	74	18	92	336	35	1,335	1,729	1,973	5,037
<i>Mid-North Coast (SD)</i>	<i>88</i>	<i>343</i>	<i>1,577</i>	<i>1,920</i>	<i>8,228</i>	<i>195</i>	<i>30,301</i>	<i>24,280</i>	<i>30,219</i>	<i>84,800</i>
Bega Valley (A)	65	75	1,007	1,082	4,879	165	13,597	12,552	14,755	40,904
Eurobodalla (A)	36	113	787	900	4,392	68	5,968	5,417	9,056	20,441
Balance	19	141	355	496	2,859	55	2,409	2,406	3,130	7,945
<i>South Eastern (SD)</i>	<i>120</i>	<i>329</i>	<i>2,149</i>	<i>2,478</i>	<i>12,130</i>	<i>288</i>	<i>21,974</i>	<i>20,375</i>	<i>26,941</i>	<i>69,290</i>
Berrigan (A)	3	25	11	36	129	5	763	517	325	1,605
Corowa (A)	7	71	24	95	376	133	1,999	2,065	1,655	5,719
Murray (A), Wakool (A) and Wentworth (A)	9	6	60	66	331	27	1,403	1,091	800	3,294
<i>Murray (SD)</i>	<i>19</i>	<i>102</i>	<i>95</i>	<i>197</i>	<i>836</i>	<i>165</i>	<i>4,165</i>	<i>3,673</i>	<i>2,780</i>	<i>10,618</i>
Balance of State	10	80	23	103	388	24	1,854	1,213	1,386	4,453
NEW SOUTH WALES	411	2,036	8,723	10,759	50,408	1,151	135,130	125,714	161,368	422,212

(a) Statistical Local Areas are not shown separately in this table when data for them are confidential or nil. Data for these are aggregated and shown as the Balance of the particular Statistical Division. Likewise, data for Statistical Divisions not specifically identified are nil or included in Balance of State. (b) Employment numbers exclude real estate agents and their employees.

STATISTICAL LOCAL AREAS (a), NEW SOUTH WALES, DECEMBER QUARTER 1994—continued

Site nights occupied				Site occupancy rates (per cent)				Takings from accommodation (\$'000)			
Oct.	Nov.	Dec.	Dec. qtr	Oct.	Nov.	Dec.	Dec. qtr	Oct.	Nov.	Dec.	Dec. qtr
426	343	378	1,147	7.8	6.5	6.9	7.0	5	4	4	13
7,531	5,716	6,150	19,397	45.4	35.6	37.1	39.4	139	103	122	364
771	523	584	1,878	16.4	11.5	12.4	13.4	12	7	8	27
14,209	13,230	13,408	40,847	50.6	48.7	47.8	49.1	78	57	72	207
1,100	1,247	1,449	3,796	13.9	16.3	18.3	16.2	11	13	14	37
3,818	3,138	3,530	10,486	25.1	21.3	23.2	23.2	39	20	21	80
8,461	7,039	7,640	23,140	13.3	11.4	12.0	12.2	112	71	76	259
36,316	31,236	33,139	100,691	25.6	22.8	23.4	23.9	397	274	316	986
4,618	4,332	4,098	13,048	16.0	15.5	14.2	15.2	54	39	51	145
2,424	2,173	2,265	6,862	32.6	30.2	30.4	31.1	28	23	25	76
3,406	2,804	2,554	8,764	47.8	40.6	35.8	41.4	50	39	34	124
12,864	11,561	11,632	36,057	24.6	22.8	22.2	23.2	149	133	135	416
23,312	20,870	20,549	64,731	24.3	22.5	21.4	22.8	281	235	245	761
34,359	33,705	57,157	125,221	24.8	25.1	41.2	30.4	332	317	905	1,555
72,923	70,319	81,734	224,976	55.5	55.3	62.2	57.7	606	579	1,018	2,202
2,436	2,117	2,387	6,940	38.3	34.4	37.6	36.8	38	32	35	104
6,969	5,637	5,494	18,100	45.0	37.6	35.4	39.3	124	87	83	294
22,709	21,044	27,580	71,333	47.1	45.1	57.2	49.8	241	176	310	728
12,323	11,831	13,215	37,369	47.2	46.8	50.6	48.2	112	79	112	302
7,910	8,248	7,888	24,046	39.5	42.6	39.4	40.5	37	65	52	154
159,629	152,901	195,455	507,985	41.3	40.9	50.6	44.3	1,490	1,334	2,515	5,339
2,244	2,922	3,636	8,802	29.8	40.1	48.3	39.4	29	32	36	97
1,428	1,603	1,537	4,568	34.4	39.9	37.0	37.1	10	12	12	33
2,920	2,447	3,277	8,644	22.8	19.7	25.6	22.7	49	44	61	153
6,166	5,682	5,203	17,051	50.0	47.6	42.2	46.6	91	84	81	256
6,378	5,187	5,829	17,394	22.5	18.9	20.5	20.6	102	77	100	279
19,136	17,841	19,482	56,459	29.3	28.3	29.9	29.2	281	249	289	819
6,060	5,188	5,369	16,617	45.5	40.2	40.3	42.0	106	85	87	279
11,159	10,628	11,556	33,343	58.7	57.8	60.8	59.1	42	41	48	131
30,063	29,607	31,509	91,179	66.0	67.1	69.1	67.4	120	130	143	393
9,172	8,957	9,904	28,033	43.5	43.9	47.0	44.8	33	31	37	102
32,816	31,729	32,788	97,333	73.2	73.1	73.1	73.2	148	152	168	468
3,546	3,160	3,334	10,040	39.7	36.6	37.3	37.9	28	25	23	77
4,210	3,864	3,759	11,833	34.0	32.2	30.3	32.2	41	36	41	118
6,102	5,548	7,220	18,870	20.2	19.0	23.9	21.1	67	63	123	253
103,128	98,681	105,439	307,248	52.8	52.2	54.0	53.0	586	564	670	1,820
9,038	7,914	6,560	23,512	43.2	39.1	31.4	37.9	78	45	31	154
1,021,330	968,979	1,134,709	3,125,018	50.7	49.7	56.3	52.3	9,035	7,960	12,693	29,689
478,369	458,692	500,708	1,437,769	51.1	50.7	53.5	51.8	5,302	4,873	5,998	16,173
1,499,699	1,427,671	1,635,417	4,562,787	50.8	50.0	55.4	52.1	14,337	12,833	18,692	45,862

TABLE 11—CARAVAN PARKS: STATISTICAL DIVISIONS AND SELECTED

Statistical Divisions and Selected Statistical Local Areas	Capacity					Total	Sites occupied by long-term guests	Other sites perman- ently reserved	Employ- ment (persons)
	Establish- ments	On-site vans	Other powered sites	Unpow- ered sites	Cabins, flats etc.				
Baulkham Hills (A)	9	40	571	118	—	729	25	250	19
Camden (A)	3	44	408	10	—	462	287	—	11
Gosford (C)	12	51	1,555	205	48	1,859	553	648	55
Hawkesbury (C)	8	67	531	114	10	722	109	163	29
Sutherland Shire (A)	6	97	239	6	57	399	195	8	19
Wyong (A)	33	368	4,031	368	162	4,929	1,022	2,131	154
Balance	20	589	1,659	147	100	2,495	1,244	10	124
<i>Sydney (SD)</i>	<i>91</i>	<i>1,256</i>	<i>8,994</i>	<i>968</i>	<i>377</i>	<i>11,595</i>	<i>3,435</i>	<i>3,210</i>	<i>411</i>
Cessnock (C)	4	41	155	32	39	267	99	—	6
Great Lakes (A)	26	198	3,002	661	227	4,088	506	1,563	141
Lake Macquarie (C)	18	167	1,849	222	85	2,323	1,061	340	85
Muswellbrook (A)	4	75	163	28	14	280	94	—	11
Port Stephens (A)	19	145	2,644	276	104	3,169	510	1,366	105
Scone (A)	3	28	67	32	10	137	18	27	15
Balance	15	120	649	456	42	1,267	139	214	43
<i>Hunter (SD)</i>	<i>89</i>	<i>774</i>	<i>8,529</i>	<i>1,707</i>	<i>521</i>	<i>11,531</i>	<i>2,427</i>	<i>3,510</i>	<i>406</i>
Kiama (A)	7	102	1,477	327	16	1,922	31	1,108	37
Shellharbour (A)	3	50	549	240	12	851	151	208	14
Shoalhaven (C) & Wingecarribee (A)	76	470	7,622	2,078	364	10,534	697	5,574	287
Wollongong (C)	7	90	1,554	158	118	1,920	482	694	51
<i>Illawarra (SD)</i>	<i>93</i>	<i>712</i>	<i>11,202</i>	<i>2,803</i>	<i>510</i>	<i>15,227</i>	<i>1,361</i>	<i>7,584</i>	<i>389</i>
Ballina (A)	13	109	1,179	273	84	1,645	620	139	46
Byron (A)	12	87	800	788	115	1,790	302	57	33
Lismore (C)	5	99	241	41	65	446	230	2	26
Richmond River (A)	5	34	498	205	19	756	81	109	13
Tweed (A) Pts A & B	30	192	3,087	344	172	3,795	1,500	664	135
Balance	4	17	165	75	6	263	58	1	9
<i>Richmond — Tweed (SD)</i>	<i>69</i>	<i>538</i>	<i>5,970</i>	<i>1,726</i>	<i>461</i>	<i>8,695</i>	<i>2,791</i>	<i>972</i>	<i>262</i>
Bellingen (A)	9	65	583	133	27	808	170	108	24
Coffs Harbour (C)	21	202	1,670	438	223	2,533	662	63	118
Hastings (A)	29	335	2,109	608	179	3,231	773	181	124
Kempsey (A)	13	170	960	418	26	1,574	150	177	35
Maclean (A)	17	86	1,135	399	135	1,755	327	54	69
Nambucca (A)	9	98	1,047	226	101	1,472	312	119	63
Taree, Greater (C)	16	210	1,537	285	88	2,120	344	484	61
Ulmarra (A)	7	40	461	391	42	934	266	138	26
Balance	6	45	350	71	31	497	104	43	20
<i>Mid-North Coast (SD)</i>	<i>127</i>	<i>1,251</i>	<i>9,852</i>	<i>2,969</i>	<i>852</i>	<i>14,924</i>	<i>3,108</i>	<i>1,367</i>	<i>540</i>
Glen Innes (A)	6	31	143	76	26	276	19	—	19
Inverell (A)									
Pts A & B	4	45	88	21	9	163	58	—	7
Moree Plains (A)	5	43	245	68	62	418	48	—	10
Narrabri (A)	8	35	185	39	47	306	43	2	22
Tamworth (C)	4	64	272	476	27	839	102	—	15
Tenterfield (A)	4	30	75	20	13	138	5	1	7
Balance	25	188	860	708	97	1,853	183	129	67
<i>Northern (SD)</i>	<i>56</i>	<i>436</i>	<i>1,868</i>	<i>1,408</i>	<i>281</i>	<i>3,993</i>	<i>458</i>	<i>132</i>	<i>147</i>

For footnotes see end of table.

TABLE 12 — CARAVAN PARKS (a) BY STATISTICAL DIVISION, NEW SOUTH WALES—continued

Particulars	Mid - North Coast (SD)			Northern (SD)			North Western (SD)			Central West (SD)		
	Short-term	Long-term	Total	Short-term	Long-term	Total	Short-term	Long-term	Total	Short-term	Long-term	Total
ESTABLISHMENTS, CAPACITY AND EMPLOYMENT												
<i>December quarter 1993—</i>												
Establishments	53	75	128	25	31	56	23	22	45	12	20	32
Capacity												
On-site vans	527	764	1,291	140	300	440	189	213	402	46	169	215
Other powered sites	5,053	4,909	9,962	948	900	1,848	760	836	1,596	440	815	1,255
Unpowered sites	2,164	1,269	3,433	808	628	1,436	2,035	367	2,402	821	319	1,140
Cabins, flats, etc.	241	518	759	125	133	258	108	110	218	39	121	160
<i>Total capacity</i>	<i>7,985</i>	<i>7,460</i>	<i>15,445</i>	<i>2,021</i>	<i>1,961</i>	<i>3,982</i>	<i>3,092</i>	<i>1,526</i>	<i>4,618</i>	<i>1,346</i>	<i>1,424</i>	<i>2,770</i>
Sites occupied by long-term guests	668	2,501	3,169	90	403	493	64	317	381	18	330	348
Other sites permanently reserved	958	242	1,200	126	14	140	398	4	402	86	8	94
Employment (persons)	195	337	532	76	80	156	78	53	131	45	56	101
<i>December quarter 1994—</i>												
Establishments	55	72	127	24	32	56	26	18	44	15	18	33
Capacity												
On-site vans	516	735	1,251	137	299	436	221	166	387	58	140	198
Other powered sites	5,017	4,835	9,852	920	948	1,868	879	723	1,602	518	743	1,261
Unpowered sites	1,766	1,203	2,969	750	658	1,408	2,021	329	2,350	1,163	280	1,443
Cabins, flats, etc.	313	539	852	135	146	281	146	89	235	75	115	190
<i>Total capacity</i>	<i>7,612</i>	<i>7,312</i>	<i>14,924</i>	<i>1,942</i>	<i>2,051</i>	<i>3,993</i>	<i>3,267</i>	<i>1,307</i>	<i>4,574</i>	<i>1,814</i>	<i>1,278</i>	<i>3,092</i>
Sites occupied by long-term guests	704	2,404	3,108	89	369	458	108	245	353	22	336	358
Other sites permanently reserved	996	371	1,367	127	5	132	344	8	352	101	5	106
Employment (persons)	215	325	540	67	80	147	98	47	145	52	50	102
SITE NIGHTS OCCUPIED ('000)												
<i>December quarter 1993</i>	<i>311.3</i>	<i>321.1</i>	<i>632.4</i>	<i>44.0</i>	<i>49.4</i>	<i>93.4</i>	<i>69.6</i>	<i>41.1</i>	<i>110.7</i>	<i>18.5</i>	<i>45.4</i>	<i>63.9</i>
<i>1994—</i>												
October	96.4	107.2	203.6	17.2	15.7	32.8	26.2	10.1	36.3	6.9	16.4	23.3
November	83.2	100.1	183.3	14.7	14.9	29.6	21.6	9.7	31.2	6.1	14.8	20.9
December	116.0	120.4	236.3	15.6	15.5	31.2	23.4	9.7	33.1	6.3	14.3	20.5
<i>December quarter 1994</i>	<i>295.6</i>	<i>327.7</i>	<i>623.3</i>	<i>47.5</i>	<i>46.1</i>	<i>93.6</i>	<i>71.2</i>	<i>29.5</i>	<i>100.7</i>	<i>19.3</i>	<i>45.5</i>	<i>64.7</i>
SITE OCCUPANCY RATES (per cent)												
<i>December quarter 1993</i>	<i>42.4</i>	<i>47.2</i>	<i>44.7</i>	<i>23.7</i>	<i>27.4</i>	<i>25.5</i>	<i>24.5</i>	<i>29.2</i>	<i>26.1</i>	<i>14.9</i>	<i>34.6</i>	<i>25.1</i>
<i>1994—</i>												
October	40.9	47.3	44.0	28.5	24.7	26.5	25.9	24.9	25.6	12.3	41.3	24.3
November	36.4	45.6	40.9	25.3	24.2	24.7	22.0	24.7	22.8	11.1	38.6	22.5
December	49.1	53.1	51.1	26.0	24.4	25.2	23.1	23.9	23.4	11.2	36.0	21.4
<i>December quarter 1994</i>	<i>42.2</i>	<i>48.7</i>	<i>45.4</i>	<i>26.6</i>	<i>24.4</i>	<i>25.5</i>	<i>23.7</i>	<i>24.5</i>	<i>23.9</i>	<i>11.6</i>	<i>38.7</i>	<i>22.8</i>
TAKINGS FROM ACCOMMODATION (\$'000)												
<i>December quarter 1993</i>	<i>3,139</i>	<i>3,618</i>	<i>6,756</i>	<i>438</i>	<i>533</i>	<i>971</i>	<i>570</i>	<i>474</i>	<i>1,044</i>	<i>200</i>	<i>580</i>	<i>780</i>
<i>1994—</i>												
October	1,052	1,216	2,268	169	184	354	282	114	397	90	192	281
November	891	1,039	1,930	138	161	299	179	95	274	63	171	235
December	1,484	1,536	3,020	152	176	327	207	109	316	87	158	245
<i>December quarter 1994</i>	<i>3,427</i>	<i>3,791</i>	<i>7,218</i>	<i>459</i>	<i>521</i>	<i>980</i>	<i>668</i>	<i>318</i>	<i>986</i>	<i>240</i>	<i>521</i>	<i>761</i>

For footnotes see end of table.

TABLE 11 — CARAVAN PARKS: STATISTICAL DIVISIONS AND SELECTED

Statistical Divisions and Selected Statistical Local Areas	Capacity					Total	Sites occupied by long-term guests	Other sites perman- ently reserved	Employ- ment (persons)
	Establish- ments	On-site vans	Other powered sites	Unpow- ered sites	Cabins, flats etc.				
Bourke (A)	3	27	76	66	8	177	8	2	5
Dubbo (C)	5	128	228	144	35	535	86	—	25
Gilgandra (A)	4	17	98	17	20	152	9	1	9
Mudgee (A)	6	62	345	417	81	905	112	272	22
Narromine (A)	5	32	165	48	10	255	24	—	9
Wellington (A)	4	35	134	291	31	491	6	73	17
Balance	17	86	556	1,367	50	2,059	108	4	58
<i>North Western (SD)</i>	<i>44</i>	<i>387</i>	<i>1,602</i>	<i>2,350</i>	<i>235</i>	<i>4,574</i>	<i>353</i>	<i>352</i>	<i>145</i>
Cowra (A)	4	32	267	590	43	932	16	101	21
Forbes (A)	4	17	117	67	39	240	53	—	16
Parkes (A)	6	53	123	23	31	230	61	1	13
Balance	19	96	754	763	77	1,690	228	4	52
<i>Central West (SD)</i>	<i>33</i>	<i>198</i>	<i>1,261</i>	<i>1,443</i>	<i>190</i>	<i>3,092</i>	<i>358</i>	<i>106</i>	<i>102</i>
Bega Valley (A)	24	243	2,708	1,281	242	4,474	170	614	160
Eurobodalla (A)	27	240	3,000	781	216	4,237	330	1,693	167
Goulburn (C)	3	41	130	16	18	205	32	—	12
Queanbeyan (C) & Yarrowlumla (A)	4	35	267	83	115	500	120	—	20
Snowy River (A)	13	115	823	478	140	1,556	1	577	70
Yass (A)	5	21	468	306	48	843	26	311	19
Balance	10	49	279	296	22	646	28	182	24
<i>South Eastern (SD)</i>	<i>86</i>	<i>744</i>	<i>7,675</i>	<i>3,241</i>	<i>801</i>	<i>12,461</i>	<i>707</i>	<i>3,377</i>	<i>472</i>
Griffith (C)	3	14	103	100	26	243	31	—	6
Murrumbidgee (A)	3	24	75	35	—	134	44	2	4
Tumut (A)	5	20	269	85	39	413	1	33	11
Wagga Wagga (C)	8	98	170	77	53	398	97	1	32
Balance	17	74	505	265	72	916	44	5	42
<i>Murrumbidgee (SD)</i>	<i>36</i>	<i>230</i>	<i>1,122</i>	<i>562</i>	<i>190</i>	<i>2,104</i>	<i>217</i>	<i>41</i>	<i>95</i>
Albury (C)	5	64	218	90	58	430	108	2	16
Berrigan (A)	8	16	520	40	37	613	40	252	30
Corowa (A)	10	17	1,185	170	98	1,470	63	793	40
Deniliquin (A)	6	35	446	171	28	680	37	240	15
Murray (A)	10	8	1,143	205	90	1,446	74	909	51
Wakool (A)	4	15	210	36	27	288	20	71	7
Wentworth (A)	6	59	239	58	44	400	69	1	15
Balance	13	44	525	252	153	974	48	76	95
<i>Murray (SD)</i>	<i>62</i>	<i>258</i>	<i>4,486</i>	<i>1,022</i>	<i>535</i>	<i>6,301</i>	<i>459</i>	<i>2,344</i>	<i>269</i>
<i>Far West (SD)</i>	<i>7</i>	<i>44</i>	<i>484</i>	<i>87</i>	<i>60</i>	<i>675</i>	<i>11</i>	<i>157</i>	<i>25</i>
<i>New South Wales</i>									
Short-term parks	481	3,361	42,983	15,593	3,050	64,987	3,620	22,027	2,092
Long-term parks	312	3,467	20,062	4,693	1,963	30,185	12,065	1,125	1,171
Total	793	6,828	63,045	20,286	5,013	95,172	15,685	23,152	3,263

(a) Statistical Local Areas are not shown separately in this table when data for them are confidential or nil. Data for these are aggregated and shown as the Balance of the particular Statistical Division.

TABLE 13 — VISITOR HOSTELS BY STATISTICAL DIVISION, NEW SOUTH WALES

Particulars	Sydney (SD)	Hunter (SD)	Illawarra (SD)	Richmond- Tweed (SD)	Mid - North Coast (SD)	South Eastern (SD) (a)	Balance of State	New South Wales (a)
ESTABLISHMENTS, CAPACITY AND EMPLOYMENT								
<i>December quarter 1993—</i>								
Establishments	37	7	4	10	7	5	8	78
Bed spaces	2,862	256	124	616	283	634	251	5,026
Employment (persons)	146	28	8	36	13	49	20	300
<i>December quarter 1994—</i>								
Establishments	41	8	5	12	8	5	9	88
Bed spaces	3,055	330	256	859	303	634	337	5,774
Employment (persons)	160	18	16	41	13	61	18	327
GUEST NIGHTS								
<i>December quarter 1993</i>	191,122	3,343	2,106	31,628	8,631	17,084	4,833	258,747
<i>1994—</i>								
October	71,590	1,844	2,132	14,176	2,960	5,506	2,393	100,601
November	74,450	1,569	2,285	16,652	3,052	5,058	2,145	105,211
December	81,207	2,258	2,017	18,886	4,339	4,356	1,946	115,009
<i>December quarter 1994</i>	227,247	5,671	6,434	49,714	10,351	14,920	6,484	320,821
BED OCCUPANCY RATES (per cent)								
<i>December quarter 1993</i>	72.6	17.6	18.5	55.8	33.2	29.3	20.9	56.5
<i>1994—</i>								
October	75.6	18.0	26.9	53.2	31.5	28.0	22.9	56.2
November	81.2	15.8	29.8	64.6	33.6	26.6	21.2	60.7
December	85.7	22.1	25.4	70.9	46.2	22.2	18.6	64.3
<i>December quarter 1994</i>	80.9	18.7	27.3	62.9	37.1	25.6	20.9	60.4
GUEST ARRIVALS								
<i>December quarter 1993</i>	44,445	1,868	1,241	10,879	5,089	7,736	2,013	73,271
<i>1994—</i>								
October	16,390	976	1,271	5,988	1,995	2,931	1,025	30,576
November	16,773	904	1,232	7,347	2,017	2,477	799	31,549
December	17,784	1,210	976	9,565	2,747	2,178	759	35,219
<i>December quarter 1994</i>	50,947	3,090	3,479	22,900	6,759	7,586	2,583	97,344
AVERAGE LENGTH OF STAY (days)								
<i>December quarter 1993</i>	4.3	1.8	1.7	2.9	1.7	2.2	2.4	3.5
<i>1994—</i>								
October	4.4	1.9	1.7	2.4	1.5	1.9	2.3	3.3
November	4.4	1.7	1.9	2.3	1.5	2.0	2.7	3.3
December	4.6	1.9	2.1	2.0	1.6	2.0	2.6	3.3
<i>December quarter 1994</i>	4.5	1.8	1.8	2.2	1.5	2.0	2.5	3.3
TAKINGS FROM ACCOMMODATION (\$'000)								
<i>December quarter 1993</i>	2,533	45	25	407	96	245	55	3,406
<i>1994—</i>								
October	1,029	23	31	155	37	75	29	1,379
November	1,064	20	35	184	38	69	25	1,436
December	1,137	28	29	219	56	47	23	1,538
<i>December quarter 1994</i>	3,230	71	95	558	130	191	77	4,353

(a) Includes Australian Capital Territory establishments.

TABLE 12 — CARAVAN PARKS (a) BY STATISTICAL DIVISION, NEW SOUTH WALES

Particulars	Sydney (SD)			Hunter (SD)			Illawarra (SD)			Richmond - Tweed (SD)		
	Short-term	Long-term	Total	Short-term	Long-term	Total	Short-term	Long-term	Total	Short-term	Long-term	Total
ESTABLISHMENTS, CAPACITY AND EMPLOYMENT												
<i>December quarter 1993—</i>												
Establishments	44	49	93	53	36	89	82	11	93	27	42	69
Capacity												
On-site vans	367	890	1,257	315	448	763	502	171	673	132	378	510
Other powered sites	5,389	3,918	9,307	5,753	2,791	8,544	9,891	1,196	11,087	2,540	3,460	6,000
Unpowered sites	1,037	218	1,255	1,415	357	1,772	2,473	488	2,961	1,101	560	1,661
Cabins, flats, etc.	254	204	458	275	183	458	439	51	490	128	278	406
<i>Total capacity</i>	<i>7,047</i>	<i>5,230</i>	<i>12,277</i>	<i>7,758</i>	<i>3,779</i>	<i>11,537</i>	<i>13,305</i>	<i>1,906</i>	<i>15,211</i>	<i>3,901</i>	<i>4,676</i>	<i>8,577</i>
Sites occupied by long-term guests	461	3,022	3,483	660	1,801	2,461	565	777	1,342	300	2,465	2,765
Other sites permanently reserved	2,994	162	3,156	3,298	221	3,519	7,668	149	7,817	792	257	1,049
Employment (persons)	195	213	408	235	151	386	316	45	361	90	164	254
<i>December quarter 1994—</i>												
Establishments	43	48	91	54	35	89	83	10	93	27	42	69
Capacity												
On-site vans	398	858	1,256	330	444	774	528	184	712	136	402	538
Other powered sites	5,104	3,890	8,994	5,809	2,720	8,529	9,922	1,280	11,202	2,516	3,454	5,970
Unpowered sites	721	247	968	1,396	311	1,707	2,457	346	2,803	1,101	625	1,726
Cabins, flats, etc.	128	249	377	308	213	521	459	51	510	132	329	461
<i>Total capacity</i>	<i>6,351</i>	<i>5,244</i>	<i>11,595</i>	<i>7,843</i>	<i>3,688</i>	<i>11,531</i>	<i>13,366</i>	<i>1,861</i>	<i>15,227</i>	<i>3,885</i>	<i>4,810</i>	<i>8,695</i>
Sites occupied by long-term guests	412	3,023	3,435	653	1,774	2,427	572	789	1,361	280	2,511	2,791
Other sites permanently reserved	3,076	134	3,210	3,290	220	3,510	7,494	90	7,584	742	230	972
Employment (persons)	204	207	411	259	147	406	345	44	389	93	169	262
SITE NIGHTS OCCUPIED ('000)												
<i>December quarter 1993</i>	<i>398.8</i>	<i>331.4</i>	<i>730.2</i>	<i>450.9</i>	<i>207.0</i>	<i>657.9</i>	<i>857.4</i>	<i>90.9</i>	<i>948.4</i>	<i>185.1</i>	<i>300.6</i>	<i>485.6</i>
<i>1994—</i>												
October	128.4	108.7	237.0	145.4	68.3	213.8	281.3	28.9	310.2	55.9	95.9	151.7
November	124.6	105.4	230.0	139.2	67.3	206.6	274.1	28.3	302.4	54.5	91.9	146.4
December	136.7	111.8	248.5	159.8	70.2	230.0	306.1	31.6	337.6	72.4	98.8	171.2
<i>December quarter 1994</i>	<i>389.6</i>	<i>325.8</i>	<i>715.4</i>	<i>444.4</i>	<i>205.9</i>	<i>650.3</i>	<i>861.5</i>	<i>88.8</i>	<i>950.2</i>	<i>182.7</i>	<i>286.5</i>	<i>469.3</i>
SITE OCCUPANCY RATES (per cent)												
<i>December quarter 1993</i>	<i>61.5</i>	<i>68.9</i>	<i>64.7</i>	<i>63.2</i>	<i>59.5</i>	<i>62.0</i>	<i>70.0</i>	<i>51.9</i>	<i>67.8</i>	<i>51.6</i>	<i>70.4</i>	<i>61.8</i>
<i>1994—</i>												
October	65.2	66.8	65.9	59.8	59.8	59.8	67.9	50.0	65.7	46.4	64.3	56.3
November	65.4	67.0	66.1	59.2	60.9	59.7	68.4	50.7	66.2	46.8	63.7	56.1
December	69.4	68.8	69.1	65.7	61.4	64.3	73.9	54.8	71.5	60.1	66.3	63.5
<i>December quarter 1994</i>	<i>66.7</i>	<i>67.5</i>	<i>67.1</i>	<i>61.6</i>	<i>60.7</i>	<i>61.3</i>	<i>70.1</i>	<i>51.8</i>	<i>67.8</i>	<i>51.1</i>	<i>64.8</i>	<i>58.7</i>
TAKINGS FROM ACCOMMODATION (\$'000)												
<i>December quarter 1993</i>	<i>4,173</i>	<i>3,751</i>	<i>7,924</i>	<i>4,070</i>	<i>2,153</i>	<i>6,223</i>	<i>6,776</i>	<i>913</i>	<i>7,689</i>	<i>2,193</i>	<i>2,844</i>	<i>5,037</i>
<i>1994—</i>												
October	1,252	1,299	2,550	1,276	727	2,003	2,216	288	2,504	595	951	1,545
November	1,109	1,234	2,343	1,138	712	1,850	2,014	296	2,311	524	876	1,400
December	1,654	1,424	3,078	2,012	806	2,818	2,821	342	3,164	1,130	1,088	2,218
<i>December quarter 1994</i>	<i>4,015</i>	<i>3,956</i>	<i>7,971</i>	<i>4,426</i>	<i>2,245</i>	<i>6,671</i>	<i>7,052</i>	<i>926</i>	<i>7,978</i>	<i>2,249</i>	<i>2,915</i>	<i>5,164</i>

For footnotes see end of table.

EXPLANATORY NOTES—continued

DEFINITIONS—continued

10 *Room nights available.* The number of guest rooms available multiplied by the number of days for which they were available during the survey period. Includes operating periods only for establishments closing (other than for seasonal reasons) or opening during the survey period.

11 Occupancy in terms of *Room nights*, *Unit nights* or *Site nights occupied* refers to the total number of nights each guest room, holiday unit or caravan park site, etc. was occupied during the survey period.

NOTE: From September quarter 1992, caravan park sites, etc. permanently reserved for 2 months or more at the end of the survey period but only casually occupied by their tenants have been recorded continuously as *Site nights occupied* irrespective of whether the tenants of individual sites were in residence on any particular night. (See also paragraph 14 below). Previously, usage of these sites was recorded as *Site nights occupied* only when their tenants were in the park. Total site occupancy rates from September quarter 1992 are therefore not comparable with those from previous quarters.

12 Occupancy in terms of *Guest nights* refers to the total number of nights each paying guest stayed during the survey period.

13 *Sites occupied by long-term guests.* The total number of sites, etc. occupied at the end of the survey period by guests who have stayed continuously for 2 months or more.

14 *Other sites permanently reserved.* The total number of powered and unpowered sites, on-site vans and cabins, etc. continuously let for 2 months or more by the end of the survey period to tenants who occupy the sites only on a casual or sporadic basis. Separate data for this item are available only from September quarter 1992.

15 *Occupancy rates* represent occupancy expressed as a percentage of total capacity available during the survey period—e.g.

$$\text{Room occupancy rate (\%)} \text{ for the period} = \frac{\text{Room nights occupied}}{(\text{Guest rooms}) \times (\text{No. of days in the period})} \times 100$$

providing that, for establishments closing (other than for seasonal reasons) or opening during the period, the denominator of the above expression includes only operating periods.

16 *Guest arrivals.* The total number of paying guests counted only on the first night they stayed at the accommodation establishment.

17 *Unit lettings.* The total number of times a holiday flat, unit or house was occupied by a new tenant, counted only on the first night it was occupied by the new tenant.

18 *Average length of stay* is expressed in number of days and is calculated:

- for hotels, motels and guest houses and for visitor hostels, by dividing *Guest nights* by *Guest arrivals* and
- for holiday flats, units and houses, by dividing *Unit nights occupied* by *Unit lettings*.

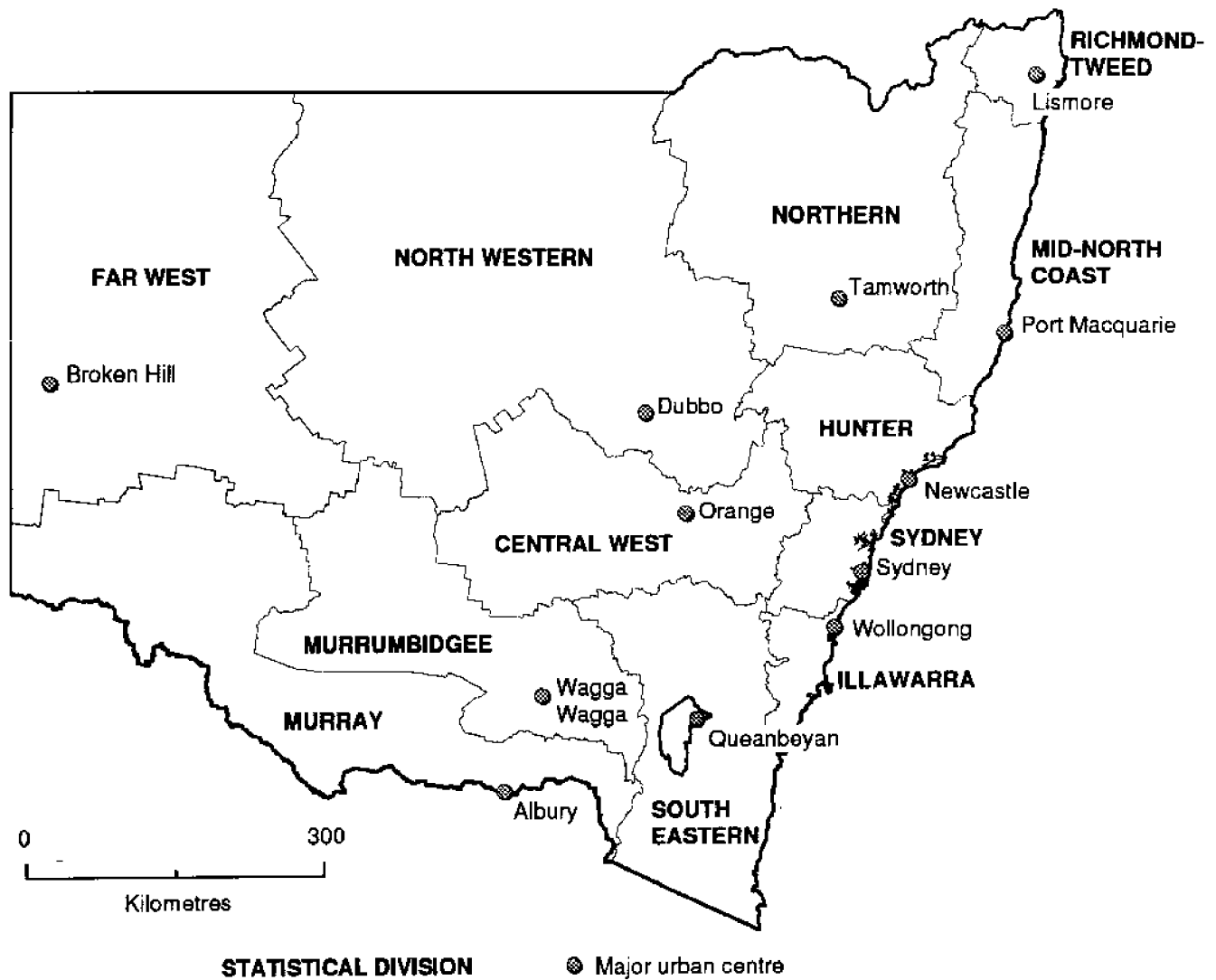
19 *Takings from accommodation.* Revenue received from the provision of accommodation. Takings from meals are excluded. Takings from accommodation for each month generally represent the takings received during that month. Where payments are received in advance of, or after, the provision of accommodation to guests, the monthly figure for takings from accommodation may not necessarily bear a direct relationship to the number of guests accommodated during the month. Rental and storage fees paid to caravan parks for the keeping of private vans in parks are included in the takings of the month they are received.

20 *Star grading.* The grading of hotels and motels with facilities based on the classification system used by members of the Australian Automobile Association (AAA). The gradings are allocated according to a points system based on the amenities and facilities available to guests. Details of the grading scheme are contained in the RACV-RAASA members' publication *Accommodation Australia*, or the individual tour guides produced by members of the AAA. For the purpose of classifying establishments to a star

EXPLANATORY NOTES

- *****
- INTRODUCTION** 1 This publication contains data for New South Wales from a quarterly survey of tourist accommodation establishments. The period covered by the latest survey is the 3 months ended 31 December 1994.
- SCOPE** 2 Tourist accommodation establishments currently included in the survey comprise two groups:
- Establishments which provide predominantly short-term accommodation (i.e. for periods of less than 2 months) to the general public. These include:
 - Hotels, motels and guest houses, with facilities* being hotels licensed to operate a public bar and motels, private hotels and guest houses all of which provide a bath (or shower) and toilet in most guest rooms and have breakfast available for guests.
 - NOTE: From December quarter 1993, hotel, motel and guest house establishments with fewer than five rooms have been formally excluded from the scope of this statistical collection. This change in scope resulted in the exclusion of 20 establishments which in the September quarter 1993 Survey aggregates for New South Wales represented 1.1 per cent of hotel, motel and guest house establishments but accounted for only 0.1 per cent of accommodation capacity, occupancy and takings.
 - Holiday flats, units and houses* (excluding establishments predominantly operated on a time share basis) which are operated by owners or managers who have sole letting rights to at least five flats, units or houses or by real estate agents for short-term letting. They are mainly self-contained in terms of cooking, bath (or shower) and toilet facilities and do not have breakfast available for guests. Data for holiday flats, units and houses include short-term owner occupation as well as paying guest occupation.
 - Visitor hostels* which provide accommodation to visitors on a bed basis (rather than by the room). This category does not include establishments providing charity type accommodation (e.g. Salvation Army hostels) nor hotels, motels and guest houses without in-room facilities which provide accommodation on a per room basis.
 - *Caravan parks* which provide either predominantly short-term (i.e. for periods of less than 2 months) or predominantly long-term (i.e. for periods of 2 months or more) accommodation to the general public and which provide powered sites for caravans and toilet, shower and laundry facilities for guests.
- 3 Data collected and published for each type of establishment (other than holiday flats, units and houses) include both long-term and short-term guests at these establishments.
- 4 Establishments which provide more than one type of accommodation (e.g. a motel with attached caravan park) are treated as two or more separate establishments. However, self-contained units, flats, cabins, etc. attached to hotels, motels or to caravan parks are included in the capacity for those establishments and not treated as separate holiday flat, unit or house establishments.
- DEFINITIONS** 5 *Number of establishments.* For hotels, motels and guest houses, caravan parks and visitor hostels, the number of establishments within the scope of the survey which operated for any part of the survey period, or which closed temporarily for the quarter for seasonal reasons.
- 6 *Number of letting entities.* For holiday flats, units and houses, the number of owners, managers or real estate agents within the scope of the survey who operated for any part of the survey period.
- 7 Capacity in terms of *Guest rooms, Bed spaces, Holiday units* or *Caravan park sites, etc.* is the maximum number available to accommodate paying guests during the survey period. Capacity closed temporarily for seasonal reasons is included.
- 8 *Bed spaces.* Three-quarter beds are counted as one bed space; double beds as two bed spaces. Cots are excluded .
- 9 *Total caravan park capacity* comprises *On-site vans, Other powered sites, Unpowered sites* and *Cabins, etc.*
- *****

**REFERENCE MAP
STATISTICAL DIVISIONS, NEW SOUTH WALES**





For more information ...

The ABS publishes a wide range of statistics and other information on Australia's economic and social conditions. Details of what is available in various publications and other products can be found in the *ABS Catalogue of Publications and Products* available at all ABS Offices (see below for contact details).

Information Consultancy Service

Information tailored to special needs of clients can be obtained from the Information Consultancy Service available at ABS Offices (see Information Inquiries below for contact details).

National Dial-a-Statistic Line

0055 86 400

(Steadycom P/L: premium rate 25c/21.4 secs.)

This number gives you 24 hour access, 365 days a year for a range of statistics.

Electronic Data Services

A large range of data is available via on-line services, diskette, magnetic tape, tape cartridge and CD ROM. For more details about these electronic data services, contact any ABS Office (see below).

Bookshops and Subscriptions

There is a large number of ABS publications available from ABS bookshops (see below Bookshop Sales for contact details). The ABS also provides a subscription service through which nominated publications are supplied by mail on a regular basis (telephone Subscription Service toll free on 008 02 0608 Australia wide).

Sales and Inquiries

Regional Offices	Information Inquiries	Bookshop Sales
SYDNEY (02)	268 4611	268 4620
MELBOURNE (03)	615 7000	615 7829
BRISBANE (07)	222 6351	222 6350
PERTH (09)	360 5140	360 5307
ADELAIDE (08)	237 7100	237 7582
HOBART (002)	205 800	205 800
CANBERRA (06)	207 0326	207 0326
DARWIN (089)	432 111	432 111
National Office		
ACT (06)	252 6007	008 020 608

ABS Email Addresses

Keylink	STAT.INFO/ABS
X.400	(C:AU,A:TELMEMO,O:ABS,SN:INFO,FN:STAT)
Internet	STAT.INFO@ABS. TELEMEMO.AU



Information Services, ABS, GPO Box 796, Sydney NSW 2001
or any ABS office

